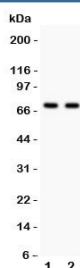


SHBG Antibody (R31739)

Catalog No.	Formulation	Size
R31739	0.5mg/ml if reconstituted with 0.2ml sterile DI water	100 ug

Bulk quote request

Availability	1-3 business days
Species Reactivity	Human
Format	Antigen affinity purified
Clonality	Polyclonal (rabbit origin)
Isotype	Rabbit IgG
Purity	Antigen affinity
Buffer	Lyophilized from 1X PBS with 2.5% BSA and 0.025% sodium azide
Gene ID	6462
Applications	Western Blot : 0.5-1ug/ml
Limitations	This SHBG antibody is available for research use only.



Western blot testing of SHBG antibody and Lane 1: HeLa; 2: COLO320; Predicted size per AA content: 44KD, but this highly glycosylated protein is observed up to 100KD

Description

Sex hormone-binding globulin (SHBG) is a glycoprotein that binds to the sex hormones androgen and estrogen. SHBG is produced mostly by the liver and is released into the bloodstream. Other sites that produce it include the brain, uterus, testes, and placenta. It has both enhancing and inhibiting hormonal influences. It decreases with high levels of insulin, growth hormone, insulin-like growth factor 1 (IGF-1), androgens, prolactin and transcortin. High estrogen, andthyroxine cause it to increase. It has been found that the monosaccharides glucose and fructose reduced human SHBG production by hepatocytes, irrespective of the presence of insulin, by downregulation of hepatocyte nuclear factor-4A and replacement of HNF4A by COUP-TFI at a cis-element within the human SHBG promoter, coincident with repression of its transcriptional activity.

Application Notes

The stated application concentrations are suggested starting amounts. Titration of the SHBG antibody may be required due to differences in protocols and secondary/substrate sensitivity.

Immunogen

Human partial recombinant protein (AA 30-210) was used as the immunogen for this SHBG antibody.

Storage

After reconstitution, the SHBG antibody can be stored for up to one month at 4°C. For long-term, aliquot and store at -20°C. Avoid repeated freezing and thawing.