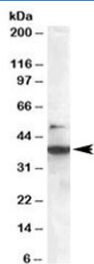


SH3GLB1 Antibody (R35326)

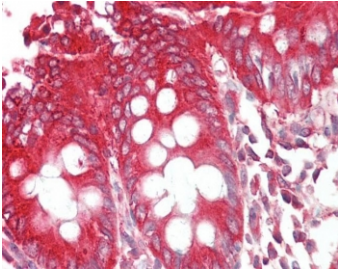
Catalog No.	Formulation	Size
R35326-100UG	0.5 mg/ml in 1X TBS, pH7.3, with 0.5% BSA (US sourced) and 0.02% sodium azide	100 ug

[Bulk quote request](#)

Availability	1-3 business days
Species Reactivity	Human
Predicted Reactivity	Mouse, Rat, Dog, Cow
Format	Antigen affinity purified
Host	Goat
Clonality	Polyclonal (goat origin)
Isotype	Goat Ig
Purity	Antigen affinity
Gene ID	51100
Localization	Cytoplasmic
Applications	Western Blot : 0.3-1.0 ug/ml IHC (FFPE) : 2.5-5ug/ml ELISA (peptide) LOD : 1:32000
Limitations	This SH3GLB1 antibody is available for research use only.



Western blot testing of Jurkat lysate with SH3GLB1 antibody at 0.3ug/ml. The expected ~38 kDa and additional ~50 kDa band are both blocked by the immunizing peptide.



IHC testing of FFPE human colon tissue with SH3GLB1 antibody at 2.5ug/ml. HIER: steamed antigen retrieval with pH6 citrate buffer; AP-staining.

Description

Additional name(s) for this target protein: SH3-domain GRB2-like endophilin B1, BIF1, Bax-interacting factor 1

Application Notes

Optimal dilution of the SH3GLB1 antibody should be determined by the researcher.

Immunogen

Amino acids QKGKVPITYLELLN were used as the immunogen for this SH3GLB1 antibody.

Storage

Aliquot and store the SH3GLB1 antibody at -20oC.