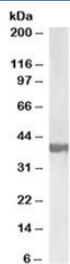


SH3GL2 Antibody / Endophilin A1 (R35957)

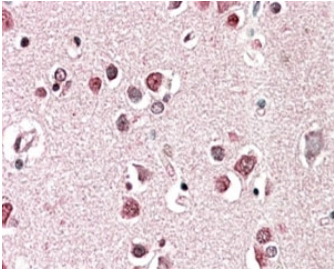
Catalog No.	Formulation	Size
R35957-100UG	0.5 mg/ml in 1X TBS, pH7.3, with 0.5% BSA (US sourced) and 0.02% sodium azide	100 ug

[Bulk quote request](#)

Availability	1-3 business days
Species Reactivity	Human
Predicted Reactivity	Pig
Format	Antigen affinity purified
Host	Goat
Clonality	Polyclonal (goat origin)
Isotype	Goat Ig
Purity	Antigen affinity
UniProt	Q99962
Gene ID	6456
Applications	Western Blot : 0.3-1ug/ml Immunohistochemistry (FFPE) : 5-10ug/ml ELISA (peptide) LOD : 1:64000
Limitations	This SH3GL2 antibody is available for research use only.



Western blot testing of human frontal cortex lysate with SH3GL2 antibody at 0.3ug/ml.
Predicted molecular weight: ~40 kDa.



IHC staining of FFPE human cerebral cortex with SH3GL2 antibody at 5ug/ml. HIER: steamed with pH6 citrate buffer, AP-staining.

Description

Additional name(s) for this target protein: SH3-domain GRB2-like 2; endophilin

Application Notes

Optimal dilution of the SH3GL2 antibody should be determined by the researcher.

Immunogen

Amino acids SLEFPTGDSTQPN were used as the immunogen for this SH3GL2 antibody.

Storage

Aliquot and store the SH3GL2 antibody at -20oC.