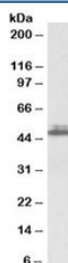


## SH3GL1 Antibody (R33910)

Catalog No.	Formulation	Size
R33910-100UG	0.5 mg/ml in 1X TBS, pH7.3, with 0.5% BSA (US sourced) and 0.02% sodium azide	100 ug

[Bulk quote request](#)

Availability	1-3 business days
Species Reactivity	Human
Predicted Reactivity	Cow, Dog
Format	Antigen affinity purified
Host	Goat
Clonality	Polyclonal (goat origin)
Isotype	Goat Ig
Purity	Antigen affinity
Gene ID	6455
Applications	Western Blot : 0.3-1.0ug/ml ELISA (peptide) LOD : 1:32000
Limitations	This SH3GL1 antibody is available for research use only.



Western blot testing of K562 lysate with SH3GL1 antibody at 0.3ug/ml. Predicted molecular weight: ~42kDa, routinely observed at ~48kDa.

### Description

Additional name(s) for this target protein: Endophilin-A2

### Application Notes

Optimal dilution of the SH3GL1 antibody should be determined by the researcher.

## Immunogen

Amino acids EPFDLGEPEQSN were used as the immunogen for this SH3GL1 antibody.

## Storage

Aliquot and store the SH3GL1 antibody at -20oC.