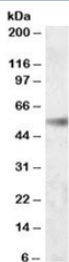


SH2D4A Antibody (R34257)

Catalog No.	Formulation	Size
R34257-100UG	0.5 mg/ml in 1X TBS, pH7.3, with 0.5% BSA (US sourced) and 0.02% sodium azide	100 ug

[Bulk quote request](#)

Availability	1-3 business days
Species Reactivity	Human
Predicted Reactivity	Dog
Format	Antigen affinity purified
Clonality	Polyclonal (goat origin)
Isotype	Goat Ig
Purity	Antigen affinity
Gene ID	63898
Applications	Western Blot : 0.1-0.3ug/ml ELISA (peptide) LOD : 1:1000
Limitations	This SH2D4A antibody is available for research use only.



Western blot testing of human kidney lysate with SH2D4A antibody at 0.1ug/ml.
Predicted molecular weight: ~53kDa.

Description

Additional name(s) for this target protein: SH2 domain containing 4A

Application Notes

Optimal dilution of the SH2D4A antibody should be determined by the researcher.

Immunogen

Amino acids HQKKESMKKKQDE were used as the immunogen for this SH2D4A antibody.

Storage

Aliquot and store the SH2D4A antibody at -20oC.