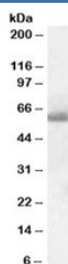


## SH2D3A Antibody (R33156)

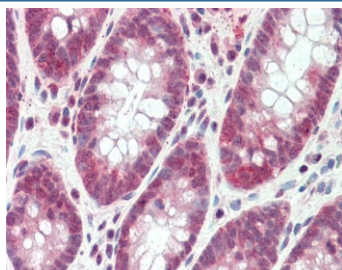
Catalog No.	Formulation	Size
R33156-100UG	0.5 mg/ml in 1X TBS, pH7.3, with 0.5% BSA (US sourced) and 0.02% sodium azide	100 ug

[Bulk quote request](#)

Availability	1-3 business days
Species Reactivity	Human
Format	Antigen affinity purified
Clonality	Polyclonal (goat origin)
Isotype	Goat Ig
Purity	Antigen affinity
Gene ID	10045
Applications	Western Blot : 0.1-0.3ug/ml IHC (FFPE) : 5ug/ml ELISA (peptide) LOD : 1:16000
Limitations	This SH2D3A antibody is available for research use only.



Western blot testing of human tonsil lysate with SH2D3A antibody at 0.1ug/ml. Predicted molecular weight: ~63 kDa.



IHC testing of FFPE human colon tissue with SH2D3A antibody at 5ug/ml. Required HIER: steamed antigen retrieval with pH6 citrate buffer; AP-staining.

## Description

Additional name(s) for this target protein: SH2 domain containing 3A

## Application Notes

Optimal dilution of the SH2D3A antibody should be determined by the researcher.

## Immunogen

Amino acids APRAERFEKFQR were used as the immunogen for this SH2D3A antibody.

## Storage

Aliquot and store the SH2D3A antibody at -20oC.