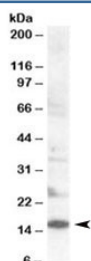


SH2D1 Antibody (R35525)

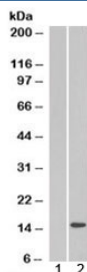
Catalog No.	Formulation	Size
R35525-100UG	0.5 mg/ml in 1X TBS, pH7.3, with 0.5% BSA (US sourced) and 0.02% sodium azide	100 ug

[Bulk quote request](#)

Availability	1-3 business days
Species Reactivity	Human
Predicted Reactivity	Pig
Format	Antigen affinity purified
Host	Goat
Clonality	Polyclonal (goat origin)
Isotype	Goat Ig
Purity	Antigen affinity
Gene ID	4068
Applications	Western Blot : 0.2-1ug/ml Immunoprecipitation : suitable under native conditions ELISA (peptide) LOD : 1:32000
Limitations	This SH2D1 antibody is available for research use only.



Western blot testing of human lymph node lysate with SH2D1 antibody at 0.2ug/ml.
Predicted molecular weight: ~14kDa.



Western blot of HEK293 lysate overexpressing SH2D1A probed with SH2D1 antibody (mock transfection in lane 1). Predicted molecular weight: ~14kDa.

Description

Additional name(s) for this target protein: SH2 domain protein 1A, SLAM associated protein, SAP, SLAM (signaling lymphocyte activation molecule) associated protein

Application Notes

Optimal dilution of the SH2D1 antibody should be determined by the researcher.

Immunogen

Amino acids QYPVEKKSSARSTQ from human SH2D1A were used as the immunogen for this SH2D1 antibody.

Storage

Aliquot and store the SH2D1 antibody at -20oC.