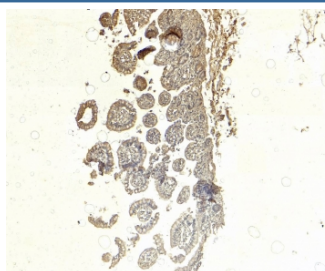


SGLT1 Antibody / Sodium/glucose cotransporter 1 (R36501)

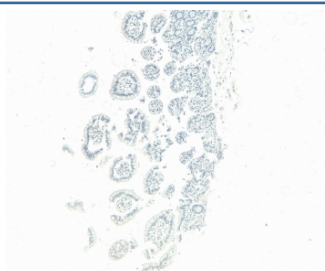
Catalog No.	Formulation	Size
R36501-100UG	0.5 mg/ml in 1X TBS, pH7.3, with 0.5% BSA (US sourced) and 0.02% sodium azide	100 ug

[Bulk quote request](#)

Availability	1-3 business days
Species Reactivity	Human
Format	Antigen affinity purified
Clonality	Polyclonal (goat origin)
Isotype	Goat Ig
Purity	Antigen affinity
UniProt	P13866
Gene ID	25552
Applications	Immunohistochemistry (FFPE) : 5ug/ml ELISA (peptide) LOD : 1:32000
Limitations	This SGLT1 antibody is available for research use only.



IHC staining of FFPE human small intestine tissue with SGLT1 antibody at 5ug/ml. Required HIER: steamed antigen retrieval with pH6 citrate buffer; HRP-staining.



Negative control: IHC staining of FFPE human small intestine tissue without primary antibody. Required HIER: steamed antigen retrieval with pH6 citrate buffer; HRP-staining.

Description

Sodium/glucose cotransporter 1 / SGLT1 is primarily found in the small intestine and the kidneys, where it facilitates the transportation of glucose and sodium across cell membranes. In the intestines, SGLT1 helps in the absorption of glucose from the food we eat, ensuring that it enters the bloodstream and provides energy to our cells. In the kidneys, SGLT1 is involved in the reabsorption of glucose from the urine back into the bloodstream, preventing its wastage and ensuring that the body retains this valuable energy source. This function becomes particularly important in cases of high blood sugar levels, such as in diabetes, where the kidneys may excrete excess glucose in the urine.

Application Notes

Optimal dilution of the SGLT1 antibody should be determined by the researcher.

Immunogen

Amino acids KETIEIETQVPEKKK were used as the immunogen for this SGLT1 antibody.

Storage

Aliquot and store the SGLT1 antibody at -20oC.