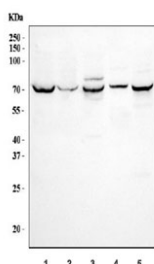


SGLT1 Antibody (R31368)

Catalog No.	Formulation	Size
R31368	0.5mg/ml if reconstituted with 0.2ml sterile DI water	100 ug

Bulk quote request

Availability	1-3 business days
Species Reactivity	Human, Mouse, Rat
Format	Antigen affinity purified
Clonality	Polyclonal (rabbit origin)
Isotype	Rabbit IgG
Purity	Antigen affinity
Buffer	Lyophilized from 1X PBS with 2.5% BSA and 0.025% sodium azide/thimerosal
UniProt	P13866
Applications	Western Blot : 0.5-1ug/ml
Limitations	This SGLT1 antibody is available for research use only.



Western blot testing of 1) human HepG2, 2) human 293T, 3) rat kidney, 4) rat NRK and 5) mouse kidney tissue lysate with SGLT1 antibody. Expected molecular weight: ~73 kDa.

Description

Sodium/glucose cotransporter 1, also known as NAGT or SGLT1 is a protein that in humans is encoded by the SLC5A1 gene. This gene encodes a member of the sodium-dependent glucose transporter (SGLT) family. The encoded integral membrane protein is the primary mediator of dietary glucose and galactose uptake from the intestinal lumen. Mutations in this gene have been associated with glucose-galactose malabsorption. Multiple transcript variants encoding different isoforms have been found for this gene.

Application Notes

The stated application concentrations are suggested starting amounts. Titration of the SGLT1 antibody may be required

due to differences in protocols and secondary/substrate sensitivity.

Immunogen

An amino acid sequence from the C-terminus of mouse Sodium/glucose cotransporter 1 (KMTKEEEEAMKMKMTD) was used as the immunogen for this SGLT1 antibody.

Storage

After reconstitution, the SGLT1 antibody can be stored for up to one month at 4°C. For long-term, aliquot and store at -20°C. Avoid repeated freezing and thawing.