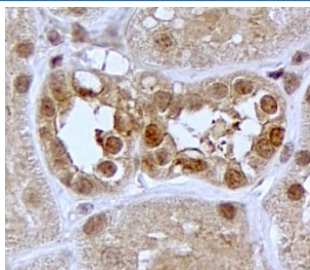


SGK1 Antibody (R36153)

Catalog No.	Formulation	Size
R36153-100UG	0.5 mg/ml in 1X TBS, pH7.3, with 0.5% BSA (US sourced) and 0.02% sodium azide	100 ug

[Bulk quote request](#)

Availability	1-3 business days
Species Reactivity	Human
Predicted Reactivity	Cow, Dog, Mouse, Rabbit, Rat
Format	Antigen affinity purified
Host	Goat
Clonality	Polyclonal (goat origin)
Isotype	Goat Ig
Purity	Antigen affinity
Gene ID	6446
Applications	Immunohistochemistry (FFPE) : 2-4ug/ml ELISA (peptide) LOD : 1:4000
Limitations	This SGK1 antibody is available for research use only.



IHC testing of FFPE human kidney with SGK1 antibody at 2ug/ml. HIER: steamed with pH6 citrate buffer, HRP-staining.

Description

Additional name(s) for this target protein: Serum/glucocorticoid regulated kinase 1

Application Notes

Optimal dilution of the SGK1 antibody should be determined by the researcher.

Immunogen

Amino acids TEEPVPNSIGKSPD were used as the immunogen for this SGK1 antibody.

Storage

Aliquot and store the SGK1 antibody at -20oC.