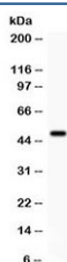


SGK1 Antibody (R31780)

Catalog No.	Formulation	Size
R31780	0.5mg/ml if reconstituted with 0.2ml sterile DI water	100 ug

[Bulk quote request](#)

Availability	1-3 business days
Species Reactivity	Human
Format	Antigen affinity purified
Host	Rabbit
Clonality	Polyclonal (rabbit origin)
Isotype	Rabbit IgG
Purity	Antigen affinity
Buffer	Lyophilized from 1X PBS with 2.5% BSA and 0.025% sodium azide
UniProt	O00141
Applications	Western Blot : 0.1-0.5ug/ml
Limitations	This SGK1 antibody is available for research use only.



Western blot testing of human HepG2 cell lysate with SGK1 antibody. Observed molecular weight of isoforms 1/2/3: ~42/49/60 kDa.

Description

Serine/threonine-protein kinase Sgk1, also called SGK1, encodes a serine/threonine protein kinase that plays an important role in cellular stress response. By fluorescence in situ hybridization, this gene is mapped to 6q23.2. This kinase activates certain potassium, sodium, and chloride channels, suggesting an involvement in the regulation of processes such as cell survival, neuronal excitability, and renal sodium excretion. High levels of expression of this gene may contribute to conditions such as hypertension and diabetic nephropathy. Several alternatively spliced transcript variants encoding different isoforms have been noted for this gene.

Application Notes

Optimal dilution of the SGK1 antibody should be determined by the researcher.

Immunogen

Amino acids MKQRRMGLNDFIQKIANN SYACKHPEVQ of human SGK1 were used as the immunogen for the SGK1 antibody.

Storage

After reconstitution, the SGK1 antibody can be stored for up to one month at 4oC. For long-term, aliquot and store at -20oC. Avoid repeated freezing and thawing.