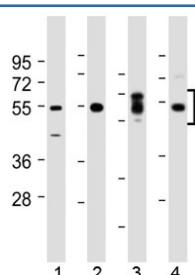


SGK1 Antibody (N-Terminal Region) (F54193)

Catalog No.	Formulation	Size
F54193-0.05ML	In 1X PBS, pH 7.4, with 0.09% sodium azide	0.05 ml

[Bulk quote request](#)

Availability	1-3 business days
Species Reactivity	Human
Predicted Reactivity	Bovine, Chicken, Mouse, Primate, Rabbit, Rat
Format	Antigen affinity purified
Host	Rabbit
Clonality	Polyclonal (rabbit origin)
Isotype	Rabbit Ig
Purity	Antigen affinity
UniProt	O00141
Applications	Western Blot : 1:1000-2:000
Limitations	This SGK1 antibody is available for research use only.



Western blot testing of human 1) kidney, 2) lung, 3) placenta and 4) HeLa lysate with SGK1 antibody at 1:2000. Predicted molecular weight of isoforms 1/2/3: ~42/49/60 kDa.

Description

Serum/glucocorticoid-regulated kinase 1 is a serine/threonine-protein kinase which is involved in the regulation of a wide variety of ion channels, membrane transporters, cellular enzymes, transcription factors, neuronal excitability, cell growth, proliferation, survival, migration and apoptosis. Plays an important role in cellular stress response. Contributes to regulation of renal Na(+) retention, renal K(+) elimination, salt appetite, gastric acid secretion, intestinal Na(+)/H(+) exchange and nutrient transport, insulin-dependent salt sensitivity of blood pressure, salt sensitivity of peripheral glucose uptake, cardiac repolarization and memory consolidation.

Application Notes

The stated application concentrations are suggested starting points. Titration of the SGK1 antibody may be required due to differences in protocols and secondary/substrate sensitivity.

Immunogen

The amino acids surrounding serine 78 of human Serum/glucocorticoid-regulated kinase 1 were used as the immunogen for the SGK1 antibody.

Storage

Aliquot the SGK1 antibody and store frozen at -20oC or colder. Avoid repeated freeze-thaw cycles.