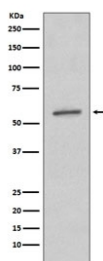


SGK1 Antibody [clone EHF-19] (RQ4685)

Catalog No.	Formulation	Size
RQ4685	Antibody in PBS with 0.02% sodium azide, 50% glycerol and 0.4-0.5mg/ml BSA	100 ul

[Bulk quote request](#)

Availability	1-2 weeks
Species Reactivity	Human
Format	Purified
Host	Rabbit
Clonality	Rabbit Monoclonal
Isotype	Rabbit IgG
Clone Name	EHF-19
Purity	Affinity purified
UniProt	O00141
Applications	Western Blot : 1:500-1:1000
Limitations	This SGK1 antibody is available for research use only.



Western blot testing of human A431 cell lysate with SGK1 antibody.

Description

Serine/threonine-protein kinase Sgk1, also called SGK1, encodes a serine/threonine protein kinase that plays an important role in cellular stress response.

Application Notes

Optimal dilution of the SGK1 antibody should be determined by the researcher.

Immunogen

A synthetic peptide specific to human SGK1 / SGK was used as the immunogen for the SGK1 antibody.

Storage

Store the SGK1 antibody at -20oC.