

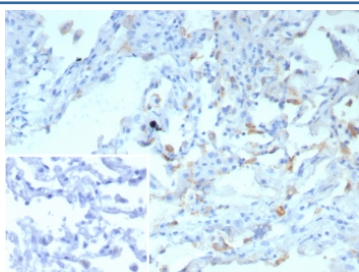
## SFTPD Antibody / Surfactant protein D [clone rSFTPD/8065] (V4107)

Catalog No.	Formulation	Size
V4107-100UG	0.2 mg/ml in 1X PBS with 0.1 mg/ml BSA (US sourced), 0.05% sodium azide	100 ug
V4107-20UG	0.2 mg/ml in 1X PBS with 0.1 mg/ml BSA (US sourced), 0.05% sodium azide	20 ug
V4107SAF-100UG	1 mg/ml in 1X PBS; BSA free, sodium azide free	100 ug

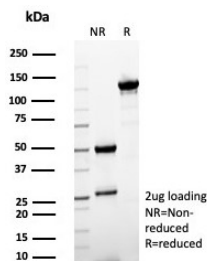
Recombinant **MOUSE MONOCLONAL**

[Bulk quote request](#)

<b>Availability</b>	1-3 business days
<b>Species Reactivity</b>	Human
<b>Format</b>	Purified
<b>Clonality</b>	Recombinant Mouse Monoclonal
<b>Isotype</b>	Mouse IgG1, kappa
<b>Clone Name</b>	rSFTPD/8065
<b>Purity</b>	Protein A/G affinity
<b>UniProt</b>	P35247
<b>Localization</b>	Secreted
<b>Applications</b>	Immunohistochemistry (FFPE) : 1-2ug/ml for 30 minutes at RT
<b>Limitations</b>	This SFTPD antibody is available for research use only.



IHC staining of FFPE human lung tissue with Surfactant Protein D antibody (clone rSFTPD/8065). Inset: PBS used in place of primary Ab (secondary Ab negative control).  
 HIER: boil tissue sections in pH 9 10mM Tris with 1mM EDTA for 20 min and allow to cool before testing.



SDS-PAGE analysis of purified, BSA-free SFTPD antibody (clone rSFTPD/8065) as confirmation of integrity and purity.

## Description

Pulmonary surfactant is primarily responsible for lowering the surface tension at the air-liquid interface in the alveoli, a process that is essential for normal respiration. Pulmonary surfactant is a mixture of phospholipids and proteins, including four distinct surfactant-associated proteins (SPs), SP-A, SP-B, SP-C, SP-D. SP-B and SP-C are predominantly hydrophobic proteins that associate with lipids to promote the absorption of surfactant phospholipids and to reduce the surface tension in the alveoli. SP-A and SP-D are large multimeric proteins belonging to the family of calcium-dependent lectins, designated Collectins, which contribute to the innate immune system. Both SP-A and SP-D have been shown to protect against microbial challenge through binding to the lipid components of the bacterial cell wall and facilitating the rapid removal of microbials.

## Application Notes

Optimal dilution of the SFTPD antibody should be determined by the researcher.

## Immunogen

A recombinant partial protein (within amino acids 200-375) from the human protein was used as the immunogen for the SFTPD antibody.

## Storage

Aliquot the SFTPD antibody and store frozen at -20oC or colder. Avoid repeated freeze-thaw cycles.