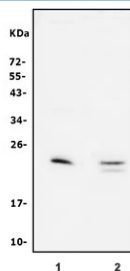


## Sftpc Antibody / Pulmonary surfactant-associated protein C (RQ6115)

Catalog No.	Formulation	Size
RQ6115	0.5mg/ml if reconstituted with 0.2ml sterile DI water	100 ug

**Bulk quote request**

<b>Availability</b>	1-3 business days
<b>Species Reactivity</b>	Mouse, Rat
<b>Format</b>	Antigen affinity purified
<b>Clonality</b>	Polyclonal (rabbit origin)
<b>Isotype</b>	Rabbit IgG
<b>Purity</b>	Affinity purified
<b>Buffer</b>	Lyophilized from 1X PBS with 2% Trehalose and 0.025% sodium azide
<b>UniProt</b>	P21841
<b>Applications</b>	Western Blot : 1-2ug/ml Direct ELISA : 0.1-0.5ug/ml
<b>Limitations</b>	This Sftpc antibody is available for research use only.



Western blot testing of 1) rat lung and 2) mouse lung lysate. Predicted molecular weight ~21 kDa.

### Description

SFTPC (Surfactant pulmonary -associated protein C), also known as SFTP2, SPC, PSP-C or PULMONARY SURFACTANT PROTEIN SP5, is a protein that in humans is encoded by the SFTPC gene. It is a membrane protein which manufactures surfactant. Glasser et al.(1988) assigned the SFTPC gene, symbolized SFTP2 by the Human Gene Mapping nomenclature committee, to chromosome 8 by hybridization to somatic cell hybrid DNA. Wood et al.(1994) identified 4 cosmid at the SFTP2 locus by cDNA hybridization. Using a polymorphic CA repeat in the SFTP2 gene and linkage analysis in 8 CEPH families, they located the gene close to D8S298; maximum lod = 19.3 at theta = 0.01. They regionalized the gene to 8p21 by fluorescence in situ hybridization. Moore et al.(1992) showed that the corresponding

mouse gene, Sftp2, maps to chromosome 14.

## Application Notes

Optimal dilution of the Sftpc antibody should be determined by the researcher.

## Immunogen

A mouse recombinant partial protein (amino acids S98-I193) was used as the immunogen for the Sftpc antibody.

## Storage

After reconstitution, the Sftpc antibody can be stored for up to one month at 4oC. For long-term, aliquot and store at -20oC. Avoid repeated freezing and thawing.