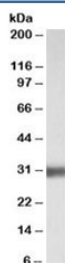


SFTPA1 Antibody (R34223)

Catalog No.	Formulation	Size
R34223-100UG	0.5 mg/ml in 1X TBS, pH7.3, with 0.5% BSA (US sourced) and 0.02% sodium azide	100 ug

[Bulk quote request](#)

Availability	1-3 business days
Species Reactivity	Human
Predicted Reactivity	Cow
Format	Antigen affinity purified
Host	Goat
Clonality	Polyclonal (goat origin)
Isotype	Goat Ig
Purity	Antigen affinity
Gene ID	653509; 729238
Applications	Western Blot : 0.01-0.03ug/ml ELISA (peptide) LOD : 1:32000
Limitations	This SFTPA1 antibody is available for research use only.



Western blot testing of human lung lysate with SFTPA1 antibody at 0.01ug/ml. Predicted molecular weight: ~28kDa, routinely observed at 30~35kDa.

Description

Additional name(s) for this target protein: Surfactant protein A1; 35 kDa pulmonary surfactant-associated protein

Application Notes

Optimal dilution of the SFTPA1 antibody should be determined by the researcher.

Immunogen

Amino acids HLDEELQATLHDFR were used as the immunogen for this SFTPA1 antibody.

Storage

Aliquot and store the SFTPA1 antibody at -20oC.