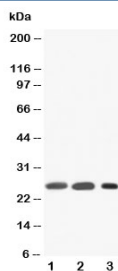


## SFTPA1 Antibody (R30413)

Catalog No.	Formulation	Size
R30413	0.2mg/ml in PBS with 50% glycerol and 0.025% sodium azide	100 ug

**Bulk quote request**

<b>Availability</b>	1-3 business days
<b>Species Reactivity</b>	Human, Rat
<b>Format</b>	Antigen affinity purified
<b>Clonality</b>	Polyclonal (rabbit origin)
<b>Isotype</b>	Rabbit IgG
<b>Purity</b>	Antigen affinity
<b>UniProt</b>	Q8IWL2
<b>Applications</b>	Western Blot : 0.5-1ug/ml
<b>Limitations</b>	This SFTPA1 antibody is available for research use only.



Western blot testing of SFTPA1 antibody and Lane 1: rat lung; 2: rat lung (different lot); 3: human Raji lysate. Predicted molecular weight: ~26 kDa but may be observed at higher molecular weights due to glycosylation.

## Description

Surfactant protein A is an innate immune system collectin. The gene encoding SP-A map to mouse chromosome 14.1. Surfactant protein-A, which plays a role in innate host defense in the lung, is also expressed in the Eustachian tube. We report that the frequency of specific surfactant protein-A haplotypes and genotypes differs between children with recurrent otitis media compared with a control population.

## Application Notes

The stated application concentrations are suggested starting amounts. Titration of the SFTPA1 antibody may be required due to differences in protocols and secondary/substrate sensitivity.

## Immunogen

An amino acid sequence from the C-terminus of human SFTPA1 (KEQCVEMYTDGQWNR) was used as the immunogen for this SFTPA1 antibody.

## Storage

Store the SFTPA1 antibody at -20oC.