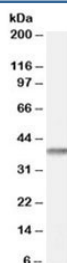


SFRP2 Antibody (R34638)

Catalog No.	Formulation	Size
R34638-100UG	0.5 mg/ml in 1X TBS, pH7.3, with 0.5% BSA (US sourced) and 0.02% sodium azide	100 ug

[Bulk quote request](#)

Availability	1-3 business days
Species Reactivity	Human
Predicted Reactivity	Dog, Mouse, Rat
Format	Antigen affinity purified
Host	Goat
Clonality	Polyclonal (goat origin)
Isotype	Goat Ig
Purity	Antigen affinity
Gene ID	6423
Applications	Western Blot : 1-3ug/ml ELISA (peptide) LOD : 1:32000
Limitations	This SFRP2 antibody is available for research use only.



Western blot testing of human duodenum lysate with SFRP2 antibody at 0.1ug/ml.
Predicted molecular weight: ~34kDa.

Description

Additional name(s) for this target protein: Secreted frizzled-related protein 2

Application Notes

Optimal dilution of the SFRP2 antibody should be determined by the researcher.

Immunogen

Amino acids KRWQKGQREFKR were used as the immunogen for this SFRP2 antibody.

Storage

Aliquot and store the SFRP2 antibody at -20oC.