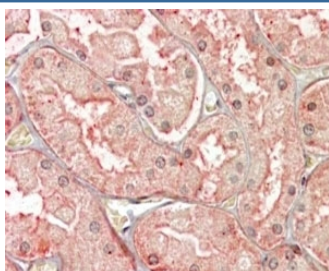


## SFRP1 Antibody (R34542)

Catalog No.	Formulation	Size
R34542-100UG	0.5 mg/ml in 1X TBS, pH7.3, with 0.5% BSA (US sourced) and 0.02% sodium azide	100 ug

[Bulk quote request](#)

Availability	1-3 business days
Species Reactivity	Human
Predicted Reactivity	Cow, Mouse
Format	Antigen affinity purified
Clonality	Polyclonal (goat origin)
Isotype	Goat Ig
Purity	Antigen affinity
Gene ID	6422
Applications	Immunohistochemistry (FFPE) : 3-6ug/ml ELISA (peptide) LOD : 1:1000
Limitations	This SFRP1 antibody is available for research use only.



IHC testing of FFPE human kidney with SFRP1 antibody at 4ug/ml. HIER: steamed with pH6 citrate buffer, AP-staining. Vesicular staining is seen.

## Description

Additional name(s) for this target protein: Secreted frizzled-related protein 1

## Application Notes

Optimal dilution of the SFRP1 antibody should be determined by the researcher.

## Immunogen

Amino acids KNHECPTFQSVFK were used as the immunogen for this SFRP1 antibody.

## **Storage**

Aliquot and store the SFRP1 antibody at -20oC.