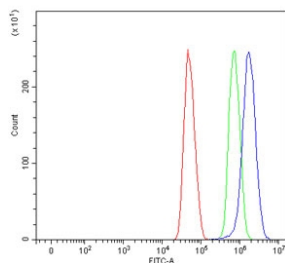


SFR1 Antibody / MEI5 (RQ7533)

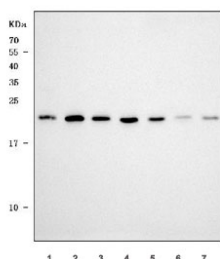
Catalog No.	Formulation	Size
RQ7533	0.5mg/ml if reconstituted with 0.2ml sterile DI water	100 ug

[Bulk quote request](#)

Availability	1-3 business days
Species Reactivity	Human, Mouse, Rat
Predicted Reactivity	Human
Format	Antigen affinity purified
Host	Rabbit
Clonality	Polyclonal (rabbit origin)
Isotype	Rabbit IgG
Purity	Antigen affinity purified
Buffer	Lyophilized from 1X PBS with 2% Trehalose
UniProt	Q86XK3
Applications	Western Blot : 0.5-1ug/ml Flow Cytometry : 1-3ug/million cells
Limitations	This SFR1 antibody is available for research use only.



Flow cytometry testing of human U-251 cells with SFR1 antibody at 1ug/million cells (blocked with goat sera); Red=cells alone, Green=isotype control, Blue= SFR1 antibody.



Western blot testing of 1) human A431, 2) human U-251, 3) human HaCaT, 4) human Jurkat, 5) rat liver, 6) mouse brain and 7) mouse liver tissue lysate with SFR1 antibody. Predicted molecular weight ~27-36 kDa.

Description

SFR1 (Swi5-dependent recombination DNA repair protein 1 homolog), also called Meiosis protein 5 homolog (MEI5) is a component of the SWI5-SFR1 complex, a complex required for double-strand break repair via homologous recombination.

Application Notes

Optimal dilution of the SFR1 antibody should be determined by the researcher.

Immunogen

Amino acids EKVSEKLPKQRLNAEKAKLVKQ from the human protein were used as the immunogen for the SFR1 antibody.

Storage

After reconstitution, the SFR1 antibody can be stored for up to one month at 4°C. For long-term, aliquot and store at -20°C. Avoid repeated freezing and thawing.