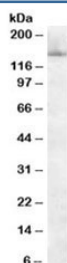


SF3B3 Antibody / SAP130 / Splicing factor 3b subunit 3 (R36339)

Catalog No.	Formulation	Size
R36339-100UG	0.5 mg/ml in 1X TBS, pH7.3, with 0.5% BSA (US sourced) and 0.02% sodium azide	100 ug

[Bulk quote request](#)

Availability	1-3 business days
Species Reactivity	Human
Predicted Reactivity	Mouse, Rat, Dog, Cow
Format	Antigen affinity purified
Host	Goat
Clonality	Polyclonal (goat origin)
Isotype	Goat Ig
Purity	Antigen affinity
Gene ID	23450
Applications	Western Blot : 0.1-0.3ug/ml ELISA (peptide) LOD : 1:2000
Limitations	This SF3B3 antibody is available for research use only.



Western blot testing of HeLa nuclear lysate with SF3B3 antibody at 0.1ug/ml. Expected molecular weight: ~130kDa, observed here at ~150kDa.

Description

Additional name(s) for this target protein: Splicing factor 3b, subunit 3; SAP130; spliceosome-associated protein 130

Application Notes

Optimal dilution of the SF3B3 antibody should be determined by the researcher.

Immunogen

Amino acids VSKKLEDIRTRYAF were used as the immunogen for this SF3B3 antibody.

Storage

Aliquot and store the SF3B3 antibody at -20oC.