

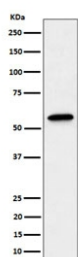
## SF3A3 Antibody / Splicing factor 3A subunit 3 / SF3a60 [clone 29S29] (RQ8673)

Catalog No.	Formulation	Size
RQ8673	Antibody in PBS with 0.02% sodium azide, 50% glycerol and 0.4-0.5mg/ml BSA	100 ul

Recombinant **RABBIT MONOCLONAL**

[Bulk quote request](#)

Availability	1-3 days
Species Reactivity	Human
Format	Purified
Clonality	Recombinant Rabbit Monoclonal
Isotype	Rabbit IgG
Clone Name	29S29
Purity	Affinity chromatography
UniProt	Q12874
Applications	Western Blot : 1:500-1:2000
Limitations	This SF3A3 antibody is available for research use only.



Western blot testing of human A431 cell lysate with SF3A3 antibody. Predicted molecular weight ~59 kDa.

### Description

Splicing factor 3A subunit 3 is a component of the 17S U2 SnRNP complex of the spliceosome, a large ribonucleoprotein complex that removes introns from transcribed pre-mRNAs. [UniProt]

### Application Notes

Optimal dilution of the SF3A3 antibody should be determined by the researcher.

## Immunogen

A synthetic peptide specific to human SF3A3 protein was used as the immunogen for the SF3A3 Antibody.

## Storage

Store the SF3A3 antibody at -20oC.