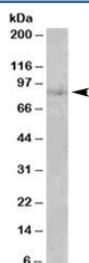


SETDB2 Antibody (R35440)

Catalog No.	Formulation	Size
R35440-100UG	0.5 mg/ml in 1X TBS, pH7.3, with 0.5% BSA (US sourced) and 0.02% sodium azide	100 ug

[Bulk quote request](#)

Availability	1-3 business days
Species Reactivity	Human
Predicted Reactivity	Cow, Dog, Mouse, Pig
Format	Antigen affinity purified
Host	Goat
Clonality	Polyclonal (goat origin)
Isotype	Goat Ig
Purity	Antigen affinity
Gene ID	83852
Applications	Western Blot : 0.1-0.3ug/ml ELISA (peptide) LOD : 1:32000
Limitations	This SETDB2 antibody is available for research use only.



Western blot testing of human heart lysate with SETDB2 antibody at 0.1ug/ml. Predicted molecular weight: ~82kDa.

Description

Additional name(s) for this target protein: SET domain, bifurcated 2

Application Notes

Optimal dilution of the SETDB2 antibody should be determined by the researcher.

Immunogen

Amino acids QRRHAKTNSHSSALH were used as the immunogen for this SETDB2 antibody.

Storage

Aliquot and store the SETDB2 antibody at -20oC.