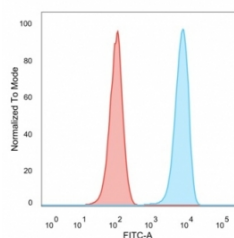


SET Antibody / Protein SET / TAFI [clone PCRP-SET-1C6] (V9261)

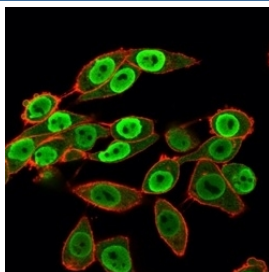
Catalog No.	Formulation	Size
V9261-100UG	0.2 mg/ml in 1X PBS with 0.1 mg/ml BSA (US sourced), 0.05% sodium azide	100 ug
V9261-20UG	0.2 mg/ml in 1X PBS with 0.1 mg/ml BSA (US sourced), 0.05% sodium azide	20 ug
V9261SAF-100UG	1 mg/ml in 1X PBS; BSA free, sodium azide free	100 ug

[Bulk quote request](#)

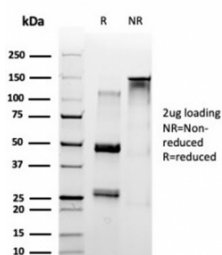
Availability	1-3 business days
Species Reactivity	Human
Format	Purified
Clonality	Monoclonal (mouse origin)
Isotype	Mouse IgG1
Clone Name	PCRP-SET-1C6
Purity	Protein A/G affinity
UniProt	Q01105
Localization	Cytoplasm, Nucleus
Applications	Flow Cytometry : 1-2ug/million cells Immunofluorescence : 1-2ug/ml Western Blot : 1-2ug/ml
Limitations	This SET antibody is available for research use only.



FACS staining of PFA-fixed human HeLa cells with SET antibody (blue, clone PCRP-SET-1C6) and isotype control (red).



Immunofluorescent staining of human HeLa cells using SET antibody (green, clone PCR-P-SET-1C6) and phalloidin (red).



SDS-PAGE analysis of purified, BSA-free SET antibody (clone PCR-P-SET-1C6) as confirmation of integrity and purity.

Human Protein Microarray Specificity Validation



Analysis of HuProt(TM) microarray containing more than 19,000 full-length human proteins using SET antibody (clone PCR-P-SET-1C6). These results demonstrate the foremost specificity of the PCR-P-SET-1C6 mAb. Z- and S- score: The Z-score represents the strength of a signal that an antibody (in combination with a fluorescently-tagged anti-IgG secondary Ab) produces when binding to a particular protein on the HuProt(TM) array. Z-scores are described in units of standard deviations (SD's) above the mean value of all signals generated on that array. If the targets on the HuProt(TM) are arranged in descending order of the Z-score, the S-score is the difference (also in units of SD's) between the Z-scores. The S-score therefore represents the relative target specificity of an Ab to its intended target.

Description

Protein SET is a multitasking protein involved in apoptosis, transcription, nucleosome assembly and histone chaperoning. Isoform 1 and isoform 2 are potent inhibitors of protein phosphatase 2A. [UniProt]

Application Notes

Optimal dilution of the SET antibody should be determined by the researcher.

Immunogen

Recombinant full-length human SET protein was used as the immunogen for the SET antibody.

Storage

Aliquot the SET antibody and store frozen at -20°C or colder. Avoid repeated freeze-thaw cycles.

