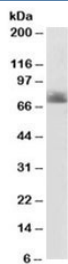


SERT Antibody / Serotonin Transporter / SLC6A4 (R34719)

Catalog No.	Formulation	Size
R34719-100UG	0.5 mg/ml in 1X TBS, pH7.3, with 0.5% BSA (US sourced) and 0.02% sodium azide	100 ug

[Bulk quote request](#)

Availability	1-3 business days
Species Reactivity	Human, Rat
Predicted Reactivity	Mouse
Format	Antigen affinity purified
Host	Goat
Clonality	Polyclonal (goat origin)
Isotype	Goat Ig
Purity	Antigen affinity
Gene ID	6532
Localization	Cell membrane
Applications	Western Blot : 1-3ug/ml Immunocytochemistry : 5ug/ml ELISA (peptide) LOD : 1:32000
Limitations	This SERT antibody is available for research use only.



SERT Antibody Colon WB. Western blot testing of human colon lysate with SERT antibody at 2ug/ml. Expected molecular weight: ~70/85-95 kDa (unmodified/glycosylated).

Description

Additional name(s) for this target protein: 5-hydroxytryptamine transporter, 5-HTT, HTT, solute carrier family 6 (neurotransmitter transporter, serotonin), member 4; SLC6A4

Explore our [SERT Antibody / Serotonin Reuptake Transporter Antibody](#) page for additional validation data and applications involving serotonergic signaling, neurotransmitter reuptake, and synaptic regulation.

Application Notes

Optimal dilution of the SERT antibody should be determined by the researcher.

Immunogen

Amino acids LHQGERETWVK were used as the immunogen for this SERT antibody.

Storage

Aliquot and store the SERT antibody at -20oC.

References (1)