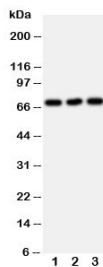


SERT Antibody / Serotonin Transporter / SLC6A4 (R30794)

| Catalog No. | Formulation | Size |
|-------------|---|--------|
| R30794 | 0.5mg/ml if reconstituted with 0.2ml sterile DI water | 100 ug |

[Bulk quote request](#)

| | |
|---------------------------|--|
| Availability | 1-3 business days |
| Species Reactivity | Human |
| Format | Antigen affinity purified |
| Host | Rabbit |
| Clonality | Polyclonal (rabbit origin) |
| Isotype | Rabbit IgG |
| Purity | Antigen affinity |
| Buffer | Lyophilized from 1X PBS with 2.5% BSA and 0.025% sodium azide/thimerosal |
| UniProt | P31645 |
| Localization | Cell membrane |
| Applications | Western Blot : 0.5-1ug/ml |
| Limitations | This SERT antibody is available for research use only. |



Western blot testing of SERT antibody and Lane 1: U87; 2: HeLa; 3: Jurkat cell lysate.
Expected molecular weight: ~70/85-95kDa (unmodified/glycosylated).

Description

SLC6A4 (Solute carrier family 6, member 4), also known as SERT (Serotonin transporter), is a monoamine transporter protein. The SLC6A4 gene spans 31 kb and contains 14 exons. This protein integral membrane protein that transports the neurotransmitter serotonin from synaptic spaces into presynaptic neurons. This transport of serotonin by the SERT protein terminates the action of serotonin and recycles it in a sodium-dependent manner. This protein is the target of many antidepressant medications, including those of the SSRI class. It is a member of the sodium:neurotransmitter

symporter family. A repeat length polymorphism in the promoter of this gene has been shown to affect the rate of serotonin uptake and may play a role in sudden infant death syndrome, aggressive behavior in Alzheimer disease patients, post-traumatic stress disorder and depression-susceptibility in people experiencing emotional trauma.

Explore our [SERT Antibody / Serotonin Reuptake Transporter Antibody](#) page for additional validation data and applications involving serotonergic signaling, neurotransmitter reuptake, and synaptic regulation.

Application Notes

The stated application concentrations are suggested starting amounts. Titration of the SERT antibody may be required due to differences in protocols and secondary/substrate sensitivity.

Immunogen

An amino acid sequence from the N-terminus of human Serotonin transporter (NSQKVLSECKDREDCQEN) was used as the immunogen for this SERT antibody.

Storage

After reconstitution, the SERT antibody can be stored for up to one month at 4oC. For long-term, aliquot and store at -20oC. Avoid repeated freezing and thawing.

References (1)