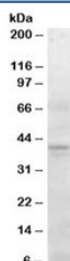


SERPINI2 Antibody (R34438)

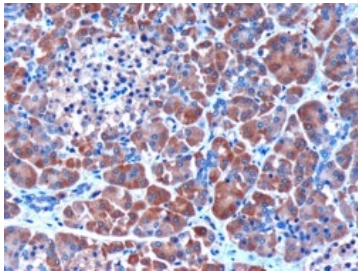
Catalog No.	Formulation	Size
R34438-100UG	0.5 mg/ml in 1X TBS, pH7.3, with 0.5% BSA (US sourced) and 0.02% sodium azide	100 ug

[Bulk quote request](#)

Availability	1-3 business days
Species Reactivity	Human
Predicted Reactivity	Dog, Mouse, Rat
Format	Antigen affinity purified
Host	Goat
Clonality	Polyclonal (goat origin)
Isotype	Goat Ig
Purity	Antigen affinity
Gene ID	5276
Applications	Western Blot : 0.3-1ug/ml Immunohistochemistry (FFPE) : 3ug/ml ELISA (peptide) LOD : 1:64000
Limitations	This SERPINI2 antibody is available for research use only.



Western blot testing of human pancreas lysate with SERPINI2 antibody at 0.3ug/ml.
Predicted molecular weight: ~46kDa, observed here at ~40kDa.



IHC staining of FFPE human pancreas with SERPINI2 antibody at 3µg/ml. HIER: microwaved with pH6 citrate buffer, HRP-staining

Description

Additional name(s) for this target protein: MEPI, PI14, PANCPI, TSA2004

Application Notes

Optimal dilution of the SERPINI2 antibody should be determined by the researcher.

Immunogen

Amino acids KGDWKQKFRKEDTQ were used as the immunogen for this SERPINI2 antibody.

Storage

Aliquot and store the SERPINI2 antibody at -20°C.