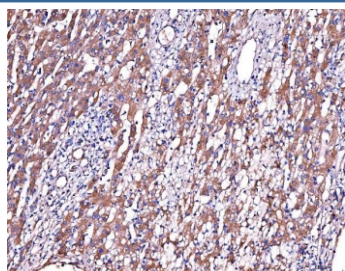


## SERPINF2 Antibody / Alpha-2-Antiplasmin (RQ6901)

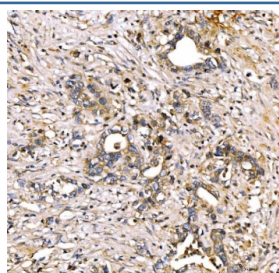
Catalog No.	Formulation	Size
RQ6901	0.5mg/ml if reconstituted with 0.2ml sterile DI water	100 ug

**Bulk quote request**

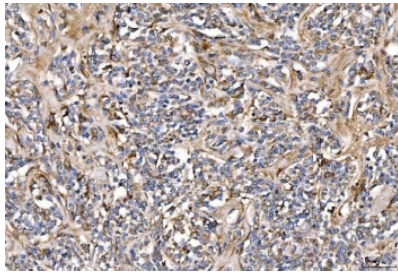
<b>Availability</b>	1-3 business days
<b>Species Reactivity</b>	Human
<b>Format</b>	Antigen affinity purified
<b>Clonality</b>	Polyclonal (rabbit origin)
<b>Isotype</b>	Rabbit IgG
<b>Purity</b>	Antigen affinity purified
<b>Buffer</b>	Lyophilized from 1X PBS with 2% Trehalose
<b>UniProt</b>	P08697
<b>Applications</b>	Western Blot : 1-2ug/ml Immunohistochemistry (FFPE) : 2-5ug/ml Direct ELISA : 0.1-0.5ug/ml
<b>Limitations</b>	This SERPINF2 antibody is available for research use only.



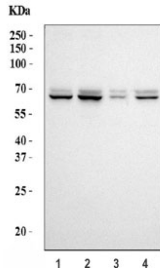
IHC staining of FFPE human liver cancer tissue with SERPINF2 antibody. HIER: boil tissue sections in pH8 EDTA for 20 min and allow to cool before testing.



IHC staining of FFPE human stomach cancer tissue with SERPINF2 antibody. HIER: boil tissue sections in pH8 EDTA for 20 min and allow to cool before testing.



IHC staining of FFPE human lymphoma tissue with SERPINF2 antibody. HIER: boil tissue sections in pH8 EDTA for 20 min and allow to cool before testing.



Western blot testing of human 1) 293T, 2) HepG2, 3) K562 and 4) HCCT cell lysate with SERPINF2 antibody. Predicted molecular weight: ~55 kDa (isoform 1) and ~48 kDa (isoform 2), but can be observed at 55-65 kDa depending on glycosylation level.

## Description

Alpha 2-antiplasmin (or  $\alpha$ 2-antiplasmin or plasmin inhibitor) is a serine protease inhibitor (serpin) responsible for inactivating plasmin. Plasmin is an important enzyme that participates in fibrinolysis and degradation of various other proteins. This protein is encoded by the SERPINF2 gene. This gene encodes a member of the serpin family of serine protease inhibitors. The protein is a major inhibitor of plasmin, which degrades fibrin and various other proteins. Consequently, the proper function of this gene has a major role in regulating the blood clotting pathway. Mutations in this gene result in alpha-2-plasmin inhibitor deficiency, which is characterized by severe hemorrhagic diathesis. Multiple transcript variants encoding different isoforms have been found for this gene.

## Application Notes

Optimal dilution of the SERPINF2 antibody should be determined by the researcher.

## Immunogen

Recombinant human protein (amino acids K461-K491) was used as the immunogen for the SERPINF2 antibody.

## Storage

After reconstitution, the SERPINF2 antibody can be stored for up to one month at 4°C. For long-term, aliquot and store at -20°C. Avoid repeated freezing and thawing.