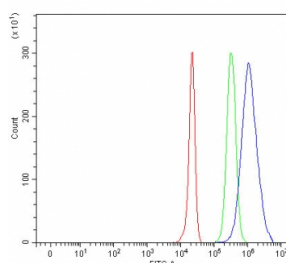


## SERPINC1 Antibody / Antithrombin III (RQ7630)

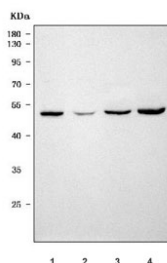
Catalog No.	Formulation	Size
RQ7630	0.5mg/ml if reconstituted with 0.2ml sterile DI water	100 ug

**Bulk quote request**

<b>Availability</b>	1-3 business days
<b>Species Reactivity</b>	Human, Mouse, Rat
<b>Format</b>	Antigen affinity purified
<b>Host</b>	Rabbit
<b>Clonality</b>	Polyclonal (rabbit origin)
<b>Isotype</b>	Rabbit IgG
<b>Purity</b>	Antigen affinity purified
<b>Buffer</b>	Lyophilized from 1X PBS with 2% Trehalose
<b>UniProt</b>	P01008
<b>Applications</b>	Western Blot : 0.5-1ug/ml Flow Cytometry : 1-3ug/million cells Direct ELISA : 0.1-0.5ug/ml
<b>Limitations</b>	This SERPINC1 antibody is available for research use only.



Flow cytometry testing of human HepG2 cells with SERPINC1 antibody at 1ug/million cells (blocked with goat sera); Red=cells alone, Green=isotype control, Blue=SERPINC1 antibody.



Western blot testing of 1) rat liver, 2) rat testis, 3) mouse ovary and 4) mouse liver tissue lysate with SERPINC1 antibody. Predicted molecular weight ~52 kDa.

## Description

Serpin peptidase inhibitor, clade C (antithrombin), member 1, also known as Antithrombin III (AT3) is the most important inhibitor of thrombin OMBIN III and other coagulation proteinases. This gene is mapped to 1q25.1. The protein encoded by this gene is a plasma protease inhibitor and a member of the serpin superfamily. This protein inhibits thrombin as well as other activated serine proteases of the coagulation system, and it regulates the blood coagulation cascade. The protein includes two functional domains: the heparin binding-domain at the N-terminus of the mature protein, and the reactive site domain at the C-terminus. The inhibitory activity is enhanced by the presence of heparin. More than 120 mutations have been identified for this gene, many of which are known to cause antithrombin-III deficiency.

## Application Notes

Optimal dilution of the SERPINC1 antibody should be determined by the researcher.

## Immunogen

E. coli-derived recombinant human protein (amino acids R89-K464) was used as the immunogen for the SERPINC1 antibody.

## Storage

After reconstitution, the SERPINC1 antibody can be stored for up to one month at 4oC. For long-term, aliquot and store at -20oC. Avoid repeated freezing and thawing.