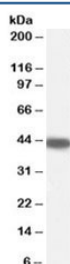


SERPINB9 Antibody / Serpin B9 (R35040)

Catalog No.	Formulation	Size
R35040-100UG	0.5 mg/ml in 1X TBS, pH7.3, with 0.5% BSA (US sourced) and 0.02% sodium azide	100 ug

[Bulk quote request](#)

Availability	1-3 business days
Species Reactivity	Human
Predicted Reactivity	Mouse, Rat
Format	Antigen affinity purified
Clonality	Polyclonal (goat origin)
Isotype	Goat Ig
Purity	Antigen affinity
Gene ID	5272
Applications	Western Blot : 0.3-1ug/ml ELISA (peptide) LOD : 1:32000
Limitations	This SERPINB9 antibody is available for research use only.



Western blot testing of human placenta lysate with SERPINB9 antibody at 0.5ug/ml.
Predicted molecular weight: ~42kDa.

Description

Additional name(s) for this target protein: Serpin peptidase inhibitor clade B (ovalbumin) member 9

Application Notes

Optimal dilution of the SERPINB9 antibody should be determined by the researcher.

Immunogen

Amino acids PKFKLQEDYDME were used as the immunogen for this SERPINB9 antibody.

Storage

Aliquot and store the SERPINB9 antibody at -20oC.