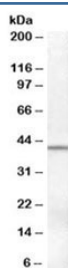


SERPINB6 Antibody (R34947)

Catalog No.	Formulation	Size
R34947-100UG	0.5 mg/ml in 1X TBS, pH7.3, with 0.5% BSA (US sourced) and 0.02% sodium azide	100 ug

[Bulk quote request](#)

Availability	1-3 business days
Species Reactivity	Human
Format	Antigen affinity purified
Clonality	Polyclonal (goat origin)
Isotype	Goat Ig
Purity	Antigen affinity
Gene ID	5269
Applications	Western Blot : 0.1-.3ug/ml ELISA (peptide) LOD : 1:128000
Limitations	This SERPINB6 antibody is available for research use only.



Western blot testing of human ovary lysate with SERPINB6 antibody at 0.1ug/ml.
Predicted molecular weight: ~43kDa.

Description

Additional name(s) for this target protein: Serpin peptidase inhibitor clade B member 6

Application Notes

Optimal dilution of the SERPINB6 antibody should be determined by the researcher.

Immunogen

Amino acids NWDEQFDKENTEER were used as the immunogen for this SERPINB6 antibody.

Storage

Aliquot and store the SERPINB6 antibody at -20oC.