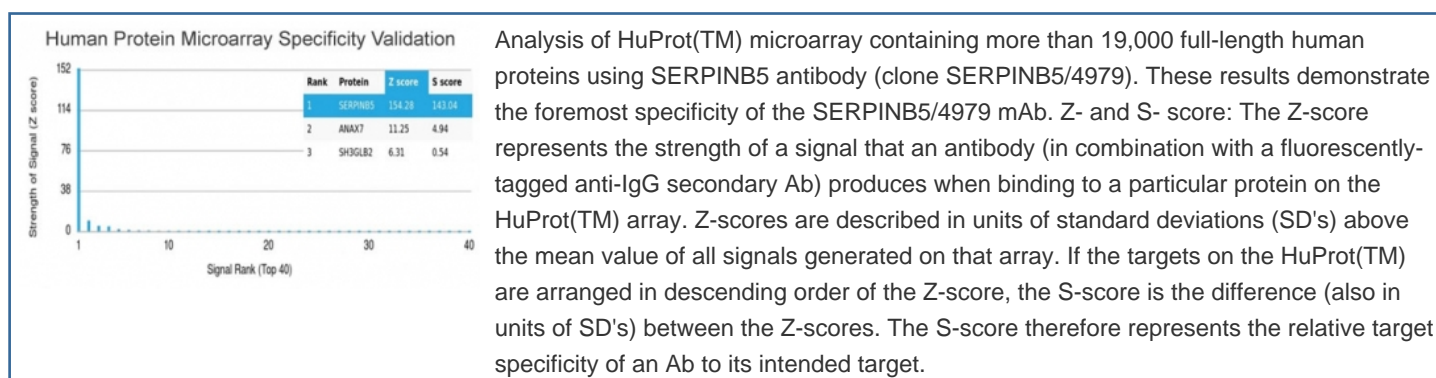


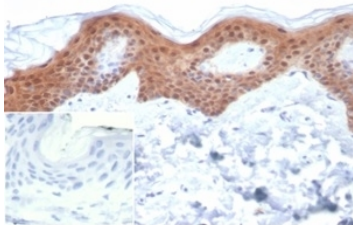
SERPINB5 Antibody / MASPIN [clone SERPINB5/4979] (V9677)

Catalog No.	Formulation	Size
V9677-100UG	0.2 mg/ml in 1X PBS with 0.1 mg/ml BSA (US sourced), 0.05% sodium azide	100 ug
V9677-20UG	0.2 mg/ml in 1X PBS with 0.1 mg/ml BSA (US sourced), 0.05% sodium azide	20 ug
V9677SAF-100UG	1 mg/ml in 1X PBS; BSA free, sodium azide free	100 ug

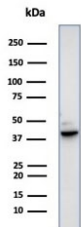
[Bulk quote request](#)

Availability	1-3 business days
Species Reactivity	Human
Format	Purified
Host	Mouse
Clonality	Monoclonal (mouse origin)
Isotype	Mouse IgG1, kappa
Clone Name	SERPINB5/4979
Purity	Protein A/G affinity
UniProt	P36952
Localization	Secreted, Extracellular space
Applications	Western Blot : 1-2ug/ml Immunohistochemistry (FFPE) : 1-2ug/ml
Limitations	This SERPINB5 antibody is available for research use only.





IHC staining of FFPE human skin tissue with SERPINB5 antibody (clone SERPINB5/4979). Negative control inset: PBS instead of primary antibody to control for secondary binding. HIER: boil tissue sections in pH 9 10mM Tris with 1mM EDTA for 20 min and allow to cool before testing.



Western blot testing of human PC3 cell lysate using SERPINB5 antibody (clone SERPINB5/4979). Predicted molecular weight: 42~45 kDa.

Description

MASPIN/SERPINB5 is structurally a serine protease inhibitor (serpin) that was initially isolated from normal human mammary epithelial cells. Serpins are a family of proteins that inhibit Chymotrypsin-like serine proteinases.

Application Notes

Optimal dilution of the SERPINB5 antibody should be determined by the researcher.

Immunogen

A portion of amino acids 1-200 was used as the immunogen for the SERPINB5 antibody.

Storage

Aliquot the SERPINB5 antibody and store frozen at -20°C or colder. Avoid repeated freeze-thaw cycles.