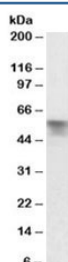


Serpina6 Antibody (R34360)

Catalog No.	Formulation	Size
R34360-100UG	0.5 mg/ml in 1X TBS, pH7.3, with 0.5% BSA (US sourced) and 0.02% sodium azide	100 ug

[Bulk quote request](#)

Availability	1-3 business days
Species Reactivity	Rat
Format	Antigen affinity purified
Host	Goat
Clonality	Polyclonal (goat origin)
Isotype	Goat Ig
Purity	Antigen affinity
Gene ID	299270
Applications	Western Blot : 0.03-0.1ug/ml ELISA (peptide) LOD : 1:16000
Limitations	This Serpina6 antibody is available for research use only.



Western blot testing of rat liver lysate with Serpina6 antibody at 0.03ug/ml. Predicted molecular weight: ~45/50-60kDa (unmodified/glycosylated).

Description

Additional name(s) for this target protein: Serine (or cysteine) peptidase inhibitor, clade A, member 6; Transcortin; Cortisol binding globulin; CBG

Application Notes

Optimal dilution of the Serpina6 antibody should be determined by the researcher.

Immunogen

Amino acids KASQQINQHVKDKT were used as the immunogen for this Serpina6 antibody.

Storage

Aliquot and store the Serpina6 antibody at -20oC.