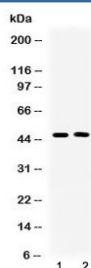


SERPINA5 Antibody (R32664)

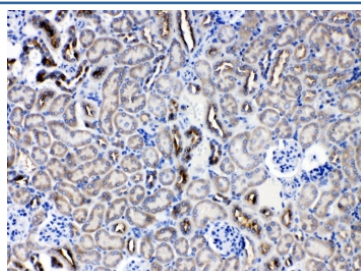
Catalog No.	Formulation	Size
R32664	0.5mg/ml if reconstituted with 0.2ml sterile DI water	100 ug

Bulk quote request

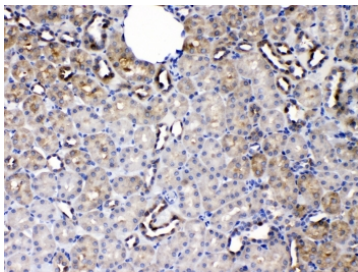
Availability	1-3 business days
Species Reactivity	Human, Mouse, Rat
Format	Antigen affinity purified
Clonality	Polyclonal (rabbit origin)
Isotype	Rabbit IgG
Purity	Antigen affinity
Buffer	Lyophilized from 1X PBS with 2.5% BSA, 0.025% sodium azide
UniProt	P05154
Applications	Western Blot : 0.5-1ug/ml IHC (FFPE) : 1-2ug/ml
Limitations	This SERPINA5 antibody is available for research use only.



Western blot testing of 1) rat liver and 2) human SKOV3 lysate with SERPINA5 antibody at 0.5ug/ml. Predicted molecular weight: 46-52 kDa.



IHC testing of FFPE mouse kidney tissue with SERPINA5 antibody at 1ug/ml. Required HIER: steam section in pH6 citrate buffer for 20 min and allow to cool prior to testing.



IHC testing of FFPE rat kidney tissue with SERPINA5 antibody at 1ug/ml. Required
HIER: steam section in pH6 citrate buffer for 20 min and allow to cool prior to testing.

Description

Protein C inhibitor (PCI), also known as SERPINA5, is serine protease inhibitor of serpin type that is found in most tissues and fluids, including blood plasma, seminal plasma and urine of human. It is a 52kD glycoprotein and belongs to serine protease inhibitor (Serpine) super family of protein. This family member is a glycoprotein that can inhibit several serine proteases, including protein C and various plasminogen activators and kallikreins, and it thus plays diverse roles in hemostasis and thrombosis in multiple organs. This gene is mapped on the q arm of chromosome 14.

Application Notes

Optimal dilution of the SERPINA5 antibody should be determined by the researcher.

Immunogen

Amino acids S86-P406 from the human protein were used as the immunogen for the SERPINA5 antibody.

Storage

After reconstitution, the SERPINA5 antibody can be stored for up to one month at 4°C. For long-term, aliquot and store at -20°C. Avoid repeated freezing and thawing.