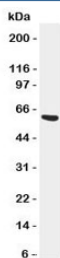


## SERPINA3 Antibody (R31341)

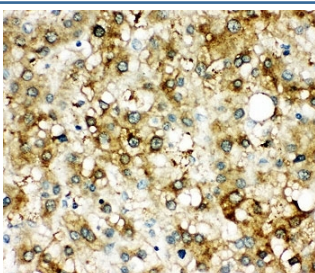
Catalog No.	Formulation	Size
R31341	0.5mg/ml if reconstituted with 0.2ml sterile DI water	100 ug

[Bulk quote request](#)

<b>Availability</b>	1-3 business days
<b>Species Reactivity</b>	Human
<b>Format</b>	Antigen affinity purified
<b>Host</b>	Rabbit
<b>Clonality</b>	Polyclonal (rabbit origin)
<b>Isotype</b>	Rabbit IgG
<b>Purity</b>	Antigen affinity
<b>Buffer</b>	Lyophilized from 1X PBS with 2.5% BSA and 0.025% sodium azide/thimerosal
<b>UniProt</b>	P01011
<b>Applications</b>	Western Blot : 0.5-1ug/ml IHC (FFPE) : 0.5-1ug/ml
<b>Limitations</b>	This SERPINA3 antibody is available for research use only.



SERPINA3 Antibody SMMC-7721 WB. Western blot testing of SERPINA3 antibody and SMMC-7721 cell lysate. Predicted molecular weight: 47/65kDa (unmodified/glycosylated).



SERPINA3 Antibody Liver Cancer IHC. Immunohistochemistry staining of human liver cancer tissue with SERPINA3 antibody.

## Description

Alpha-1-antichymotrypsin (SERPINA3) is a secreted acute phase protein that functions as a key regulator of serine protease activity in human tissues. Alpha 1-antichymotrypsin, also called serpin peptidase inhibitor, clade A (alpha-1 antiproteinase, antitrypsin), member 3 or GIG24, is an alpha globulin glycoprotein that is a member of the serpin superfamily. In humans, it is encoded by the SERPINA3 gene. This gene is mapped to 14q32.13. The protein encoded by this gene is a plasma protease inhibitor and member of the serine protease inhibitor class. Polymorphisms in this protein appear to be tissue specific and influence protease targeting. Variations in this protein's sequence have been implicated in Alzheimers disease, and deficiency of this protein has been associated with liver disease. Mutations have been identified in patients with Parkinson disease and chronic obstructive pulmonary disease.

This SERPINA3 antibody is part of a broader set of Alpha-1-antichymotrypsin antibody reagents; for a validation-focused AACT antibody reference including liver expression and protein microarray specificity data, see [AACT antibody clone SERPINA3/4184](#).

## Application Notes

The stated application concentrations are suggested starting amounts. Titration of the SERPINA3 antibody may be required due to differences in protocols and secondary/substrate sensitivity.

## Immunogen

An amino acid sequence from the middle region of human SERPINA3 (EMPFD PQDTHQSRFY) was used as the immunogen for this SERPINA3 antibody.

## Storage

After reconstitution, the SERPINA3 antibody can be stored for up to one month at 4oC. For long-term, aliquot and store at -20oC. Avoid repeated freezing and thawing.