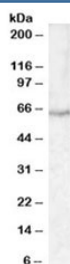


SERPINA10 Antibody (R35466)

| Catalog No. | Formulation | Size |
|--------------|---|--------|
| R35466-100UG | 0.5 mg/ml in 1X TBS, pH7.3, with 0.5% BSA (US sourced) and 0.02% sodium azide | 100 ug |

[Bulk quote request](#)

| | |
|--------------------|---|
| Availability | 1-3 business days |
| Species Reactivity | Human |
| Format | Antigen affinity purified |
| Clonality | Polyclonal (goat origin) |
| Isotype | Goat Ig |
| Purity | Antigen affinity |
| Gene ID | 51156 |
| Applications | Western Blot : 0.5-2ug/ml ELISA (peptide) LOD : 1:16000 |
| Limitations | This SERPINA10 antibody is available for research use only. |



Western blot testing of human liver lysate with SERPINA10 antibody at 0.5ug/ml. Predicted molecular weight: ~51kDa, routinely observed at ~65kDa, likely due to glycosylation.

Description

Additional name(s) for this target protein: Serpin peptidase inhibitor, clade A (alpha-1 antiproteinase, antitrypsin), member 10; ZPI, protein Z-dependent protease inhibitor

Application Notes

Optimal dilution of the SERPINA10 antibody should be determined by the researcher.

Immunogen

Amino acids QSPETPAPQNQTSR were used as the immunogen for this SERPINA10 antibody.

Storage

Aliquot and store the SERPINA10 antibody at -20oC.