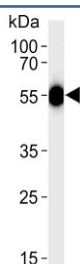


## Serpin C1 Antibody / Antithrombin III (F54427)

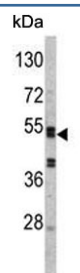
Catalog No.	Formulation	Size
F54427-0.4ML	In 1X PBS, pH 7.4, with 0.09% sodium azide	0.4 ml
F54427-0.08ML	In 1X PBS, pH 7.4, with 0.09% sodium azide	0.08 ml

[Bulk quote request](#)

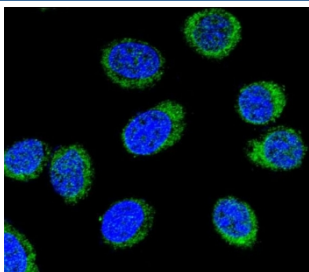
<b>Availability</b>	1-3 business days
<b>Species Reactivity</b>	Human, Mouse
<b>Format</b>	Purified
<b>Clonality</b>	Polyclonal (rabbit origin)
<b>Isotype</b>	Rabbit Ig
<b>Purity</b>	SAS precipitation
<b>UniProt</b>	P01008
<b>Applications</b>	Western Blot : 1:500-1:2000 Immunofluorescence : 1:25 Flow Cytometry : 1:25 (1x10 <sup>6</sup> cells) Immunohistochemistry (FFPE) : 1:25
<b>Limitations</b>	This Serpin C1 antibody is available for research use only.



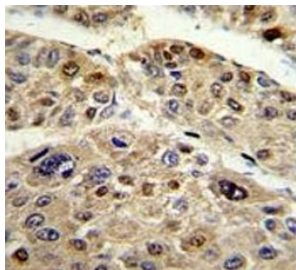
Western blot testing of human blood plasma lysate with Serpin C1 antibody. Predicted molecular weight ~52 kDa.



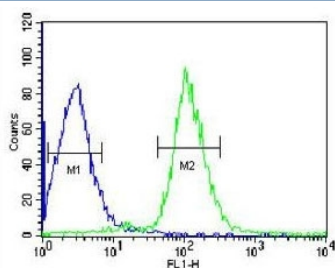
Western blot testing of mouse liver lysate with Serpin C1 antibody. Predicted molecular weight ~52 kDa.



Immunofluorescent staining of human HEK293 cells with Serpin C1 antibody (green) and DAPI nuclear stain (blue).



IHC testing of FFPE human hepatocarcinoma tissue with Serpin C1 antibody. HIER: steam section in pH6 citrate buffer for 20 min and allow to cool prior to staining.



Flow cytometry testing of human HepG2 cells with Serpin C1 antibody; Blue=isotype control, Green= Serpin C1 antibody.

## Description

SERPINC1 is a plasma protease inhibitor and a member of the serpin superfamily. This protein inhibits thrombin as well as other activated serine proteases of the coagulation system, and it regulates the blood coagulation cascade. The protein includes two functional domains: the heparin binding-domain at the N-terminus of the mature protein, and the reactive site domain at the C-terminus. The inhibitory activity is enhanced by the presence of heparin.

## Application Notes

The stated application concentrations are suggested starting points. Titration of the Serpin C1 antibody may be required due to differences in protocols and secondary/substrate sensitivity.

## Immunogen

A portion of amino acids 364-393 from the human protein was used as the immunogen for the Serpin C1 antibody.

## Storage

Aliquot the Serpin C1 antibody and store frozen at -20oC or colder. Avoid repeated freeze-thaw cycles.

