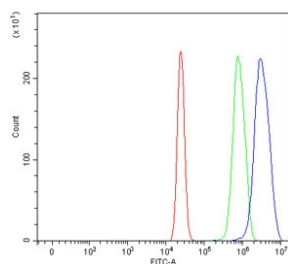


## Serpin B13 Antibody / SERPINB13 (RQ7544)

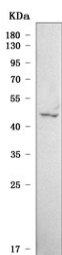
Catalog No.	Formulation	Size
RQ7544	0.5mg/ml if reconstituted with 0.2ml sterile DI water	100 ug

**Bulk quote request**

<b>Availability</b>	1-3 business days
<b>Species Reactivity</b>	Human
<b>Format</b>	Antigen affinity purified
<b>Clonality</b>	Polyclonal (rabbit origin)
<b>Isotype</b>	Rabbit IgG
<b>Purity</b>	Antigen affinity purified
<b>Buffer</b>	Lyophilized from 1X PBS with 2% Trehalose
<b>UniProt</b>	Q9UIV8
<b>Applications</b>	Western Blot : 0.5-1ug/ml Flow Cytometry : 1-3ug/million cells Direct ELISA : 0.1-0.5ug/ml
<b>Limitations</b>	This Serpin B13 antibody is available for research use only.



Flow cytometry testing of human U-2 OS cells with Serpin B13 antibody at 1ug/million cells (blocked with goat sera); Red=cells alone, Green=isotype control, Blue= Serpin B13 antibody.



Western blot testing of human 293T cell lysate with Serpin B13 antibody. Predicted molecular weight ~44 kDa.

## Description

Serpin B13 is a protein that in humans is encoded by the SERPINB13 gene. The protein encoded by this gene is a member of the serpin family of serine protease inhibitors. The encoded protein inhibits the activity of cathepsin K and is itself transcriptionally repressed by RUNX1. This gene is downregulated in many types of cancer.

## Application Notes

Optimal dilution of the Serpin B13 antibody should be determined by the researcher.

## Immunogen

E. coli-derived recombinant human protein (amino acids M1-H368) was used as the immunogen for the Serpin B13 antibody.

## Storage

After reconstitution, the Serpin B13 antibody can be stored for up to one month at 4oC. For long-term, aliquot and store at -20oC. Avoid repeated freezing and thawing.