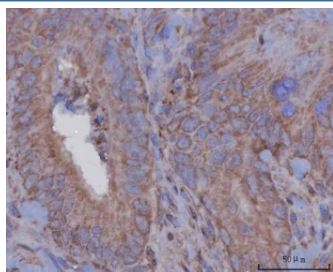


Serpin A8 Antibody / Angiotensinogen / AGT (RQ8112)

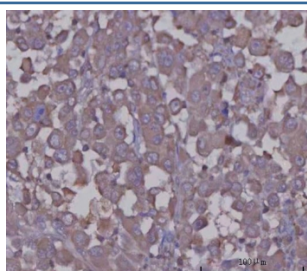
Catalog No.	Formulation	Size
RQ8112	0.5mg/ml if reconstituted with 0.2ml sterile DI water	100 ug

Bulk quote request

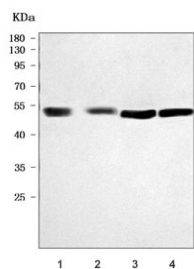
Availability	1-3 business days
Species Reactivity	Human
Format	Antigen affinity purified
Clonality	Polyclonal (rabbit origin)
Isotype	Rabbit IgG
Purity	Antigen affinity purified
Buffer	Lyophilized from 1X PBS with 2% Trehalose
UniProt	P01019
Applications	Western Blot : 0.5-1ug/ml Immunohistochemistry (FFPE) : 2-5ug/ml Flow Cytometry : 1-3ug/million cells Direct ELISA : 0.1-0.5ug/ml
Limitations	This Serpin A8 antibody is available for research use only.



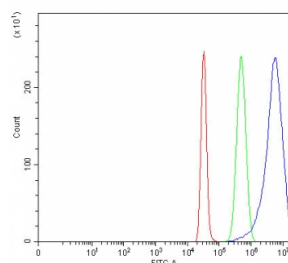
IHC staining of FFPE human rectum adenocarcinoma tissue with Serpin A8 antibody.
HIER: boil tissue sections in pH8 EDTA for 20 min and allow to cool before testing.



IHC staining of FFPE human lung adenocarcinoma tissue with Serpin A8 antibody.
HIER: boil tissue sections in pH8 EDTA for 20 min and allow to cool before testing.



Western blot testing of human 1) HCCT, 2) HCCP, 3) HepG2 and 4) HUH-7 cell lysate with Serpin A8 antibody. Predicted molecular weight ~52 kDa.



Flow cytometry testing of fixed and permeabilized human HepG2 cells with Serpin A8 antibody at 1ug/million cells (blocked with goat sera); Red=cells alone, Green=isotype control, Blue= Serpin A8 antibody.

Description

AGT (ANGIOTENSINOGEN), also called SERPINA8, is an alpha-2-globulin that is produced constitutively and released into the circulation mainly by the liver. ATG is a member of the serpin family, although it is not known to inhibit other enzymes, unlike most serpins. Angiotensinogen is also known as renin substrate. The AGT gene is mapped on 1q42.2. And the human angiotensinogen gene contains 5 exons. The expression of AGT and enzymes required for its conversion to angiotensin II in human adipose tissue. Mutations in this AGT gene are associated with susceptibility to essential hypertension, and can cause renal tubular dysgenesis, a severe disorder of renal tubular development. Defects in this gene have also been associated with non-familial structural atrial fibrillation, and inflammatory bowel disease.

Application Notes

Optimal dilution of the Serpin A8 antibody should be determined by the researcher.

Immunogen

E. coli-derived recombinant human protein (amino acids D273-R458) was used as the immunogen for the Serpin A8 antibody.

Storage

After reconstitution, the Serpin A8 antibody can be stored for up to one month at 4oC. For long-term, aliquot and store at -20oC. Avoid repeated freezing and thawing.