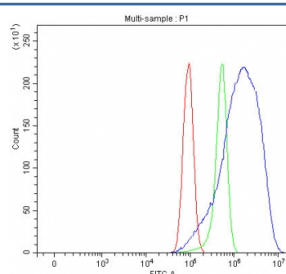


SERINC5 Antibody / Serine incorporator 5 (RQ7604)

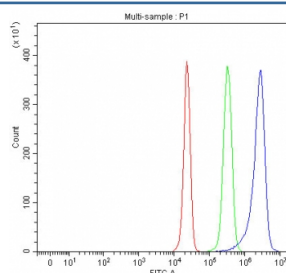
Catalog No.	Formulation	Size
RQ7604	0.5mg/ml if reconstituted with 0.2ml sterile DI water	100 ug

Bulk quote request

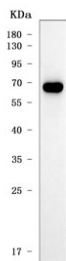
Availability	1-3 business days
Species Reactivity	Human
Format	Antigen affinity purified
Clonality	Polyclonal (rabbit origin)
Isotype	Rabbit IgG
Purity	Antigen affinity purified
Buffer	Lyophilized from 1X PBS with 2% Trehalose
UniProt	Q86VE9
Applications	Western Blot : 0.5-1ug/ml Flow Cytometry : 1-3ug/million cells Direct ELISA : 0.1-0.5ug/ml
Limitations	This SERINC5 antibody is available for research use only.



Flow cytometry testing of human PC-3 cells with SERINC5 antibody at 1ug/million cells (blocked with goat sera); Red=cells alone, Green=isotype control, Blue= SERINC5 antibody.



Flow cytometry testing of human HepG2 cells with SERINC5 antibody at 1ug/million cells (blocked with goat sera); Red=cells alone, Green=isotype control, Blue= SERINC5 antibody.



Western blot testing of human placenta tissue lysate with SERINC5 antibody. Predicted molecular weight ~47 kDa but may be observed at higher molecular weights due to glycosylation.

Description

Serine incorporator 5 is a protein that in humans is encoded by the SERINC5 gene. Predicted to enable L-serine transmembrane transporter activity. Involved in defense response to virus; detection of virus; and innate immune response. Located in several cellular components, including centrosome; cytosol; and plasma membrane

Application Notes

Optimal dilution of the SERINC5 antibody should be determined by the researcher.

Immunogen

E. coli-derived recombinant human protein (amino acids E64-H394) was used as the immunogen for the SERINC5 antibody.

Storage

After reconstitution, the SERINC5 antibody can be stored for up to one month at 4°C. For long-term, aliquot and store at -20°C. Avoid repeated freezing and thawing.