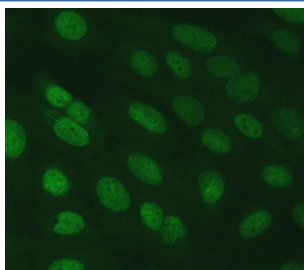


SERINC2 Antibody / Serine incorporator 2 (RQ7603)

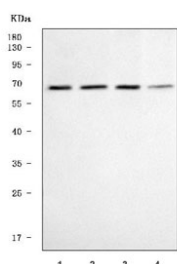
Catalog No.	Formulation	Size
RQ7603	0.5mg/ml if reconstituted with 0.2ml sterile DI water	100 ug

Bulk quote request

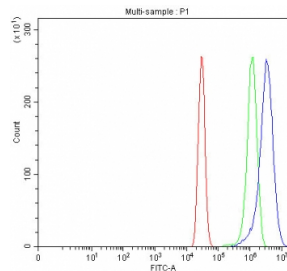
Availability	1-3 business days
Species Reactivity	Human
Format	Antigen affinity purified
Clonality	Polyclonal (rabbit origin)
Isotype	Rabbit IgG
Purity	Antigen affinity purified
Buffer	Lyophilized from 1X PBS with 2% Trehalose
UniProt	Q96SA4
Applications	Western Blot : 0.5-1ug/ml Flow Cytometry : 1-3ug/million cells Immunofluorescence : 5ug/ml Direct ELISA : 0.1-0.5ug/ml
Limitations	This SERINC2 antibody is available for research use only.



Immunofluorescent staining of FFPE human U-2 OS cells with SERINC2 antibody. HIER: steam section in pH6 citrate buffer for 20 min.



Western blot testing of human 1) HepG2, 2) HeLa, 3) MCF7 and 4) RT4 cell lysate with SERINC2 antibody. Predicted molecular weight ~51 kDa, commonly observed at 51-65 kDa.



Flow cytometry testing of human A431 cells with SERINC2 antibody at 1ug/million cells (blocked with goat sera); Red=cells alone, Green=isotype control, Blue= SERINC2 antibody.

Description

Predicted to be involved in several processes, including phosphatidylserine metabolic process; positive regulation of CDP-diacylglycerol-serine O-phosphatidyltransferase activity; and positive regulation of serine C-palmitoyltransferase activity. Located in extracellular exosome.

Application Notes

Optimal dilution of the SERINC2 antibody should be determined by the researcher.

Immunogen

E. coli-derived recombinant human protein (amino acids E62-D378) was used as the immunogen for the SERINC2 antibody.

Storage

After reconstitution, the SERINC2 antibody can be stored for up to one month at 4°C. For long-term, aliquot and store at -20°C. Avoid repeated freezing and thawing.