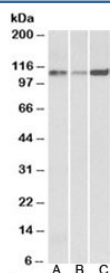


SERCA2 Antibody (R33420)

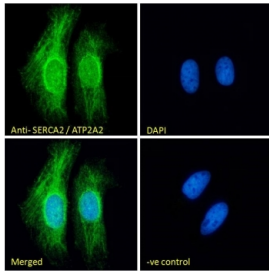
Catalog No.	Formulation	Size
R33420-100UG	0.5 mg/ml in 1X TBS, pH7.3, with 0.5% BSA (US sourced) and 0.02% sodium azide	100 ug

[Bulk quote request](#)

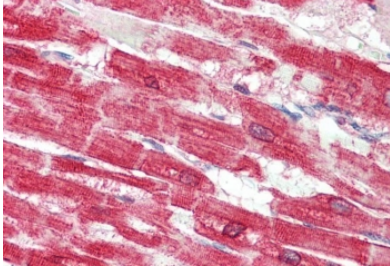
Availability	1-3 business days
Species Reactivity	Human, Mouse, Rat
Predicted Reactivity	Dog, Pig
Format	Antigen affinity purified
Host	Goat
Clonality	Polyclonal (goat origin)
Isotype	Goat Ig
Purity	Antigen affinity
Gene ID	488
Applications	Western Blot : 0.1-0.3ug/ml IF/ICC : 10ug/ml Immunohistochemistry (FFPE) : 5ug/ml ELISA (peptide) LOD : 1:128000
Limitations	This SERCA2 antibody is available for research use only.



Western blot testing of human [A], mouse [B] and rat [C] heart lysates with SERCA2 antibody at 0.1ug/ml. Predicted molecular weight: ~110 kDa.



IF/ICC staining of fixed and permeabilized human HeLa cells with SERCA2 antibody (green) at 10ug/ml and DAPI nuclear stain (blue).



IHC staining of FFPE human heart tissue with SERCA2 antibody at 5ug/ml. Required HIER: steamed antigen retrieval with pH6 citrate buffer; AP-staining.

Description

Additional name(s) for this target protein: ATPase, Ca⁺⁺ transporting, cardiac muscle, slow twitch 2; ATP2A2

Application Notes

Optimal dilution of the SERCA2 antibody should be determined by the researcher.

Immunogen

Amino acids DELNPSAQRDACLN were used as the immunogen for this SERCA2 antibody.

Storage

Aliquot and store the SERCA2 antibody at -20oC.