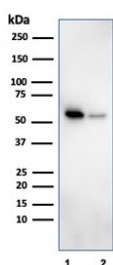


SERBP1 Antibody / PAI-RBP1 [clone SERBP1/3494] (V8445)

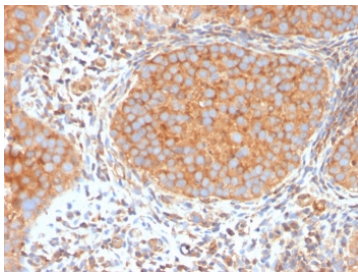
Catalog No.	Formulation	Size
V8445-100UG	0.2 mg/ml in 1X PBS with 0.1 mg/ml BSA (US sourced) and 0.05% sodium azide	100 ug
V8445-20UG	0.2 mg/ml in 1X PBS with 0.1 mg/ml BSA (US sourced) and 0.05% sodium azide	20 ug
V8445SAF-100UG	1 mg/ml in 1X PBS; BSA free, sodium azide free	100 ug

[Bulk quote request](#)

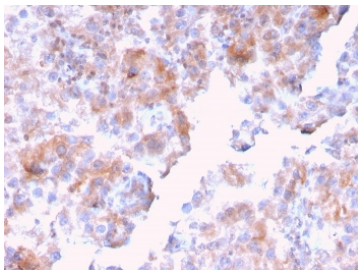
Availability	1-3 business days
Species Reactivity	Human
Format	Purified
Clonality	Monoclonal (mouse origin)
Isotype	Mouse IgG2b, kappa
Clone Name	SERBP1/3494
Purity	Protein G affinity chromatography
UniProt	Q8NC51
Localization	Cytoplasm, nucleus, perinuclear regions
Applications	Western Blot : 1-2ug/ml Immunohistochemistry (FFPE) : 1-2ug/ml for 30 minutes at RT
Limitations	This SERBP1 antibody is available for research use only.



Western blot testing of human 1) K562 and 2) PC-3 cell lysate with SERBP1 antibody. Predicted molecular weight ~45 kDa but observed at 45-60 kDa.



IHC staining of FFPE human urothelial carcinoma with SERBP1 antibody. HIER: boil tissue sections in pH 9 10mM Tris with 1mM EDTA for 20 min and allow to cool before testing.



IHC staining of FFPE human kidney with SERBP1 antibody. HIER: boil tissue sections in pH 9 10mM Tris with 1mM EDTA for 20 min and allow to cool before testing.

Human Protein Microarray Specificity Validation



Analysis of HuProt(TM) microarray containing more than 19,000 full-length human proteins using SERBP1 antibody. These results demonstrate the foremost specificity of the SERBP1/3494 mAb. Z- and S- score: The Z-score represents the strength of a signal that an antibody (in combination with a fluorescently-tagged anti-IgG secondary Ab) produces when binding to a particular protein on the HuProt(TM) array. Z-scores are described in units of standard deviations (SD's) above the mean value of all signals generated on that array. If the targets on the HuProt(TM) are arranged in descending order of the Z-score, the S-score is the difference (also in units of SD's) between the Z-scores. The S-score therefore represents the relative target specificity of an Ab to its intended target.

Description

SERBP1 is a membrane-associated protein that localizes to the nucleus, the perinuclear region of the cytoplasm and the plasma membrane. It is believed to play a role in the regulation of mRNA stability, as it specifically binds to the CRS (cyclic nucleotide-responsive sequence) motif of the PAI-1 mRNA and acts to stabilize the mRNA and regulate its expression. In addition, SERBP1 interacts with Mi2-s antiapoptotic action in ovarian cell types. SERBP1 is overexpressed in ovarian cancer, suggesting a possible role in tumorigenesis and tumor metastasis.

Application Notes

Optimal dilution of the SERBP1 antibody should be determined by the researcher.

Immunogen

A portion of amino acids 3-139 from the human protein was used as the immunogen for the SERBP1 antibody.

Storage

Store the SERBP1 antibody at 2-8°C (with azide) or aliquot and store at -20°C or colder (without azide).

