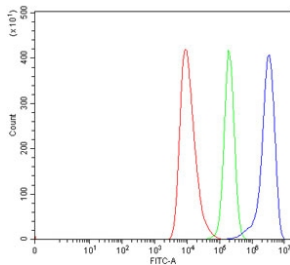


SERBP1 Antibody / PAI-RBP1 (RQ7447)

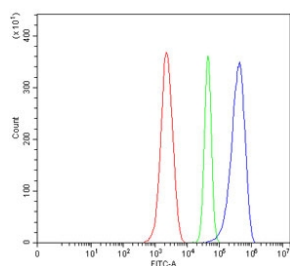
Catalog No.	Formulation	Size
RQ7447	0.5mg/ml if reconstituted with 0.2ml sterile DI water	100 ug

Bulk quote request

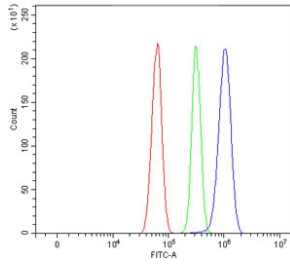
Availability	1-3 business days
Species Reactivity	Human, Mouse, Rat
Format	Antigen affinity purified
Host	Rabbit
Clonality	Polyclonal (rabbit origin)
Isotype	Rabbit IgG
Purity	Antigen affinity purified
Buffer	Lyophilized from 1X PBS with 2% Trehalose
UniProt	Q8NC51
Applications	Western Blot : 0.5-1ug/ml Flow Cytometry : 1-3ug/million cells
Limitations	This SERBP1 antibody is available for research use only.



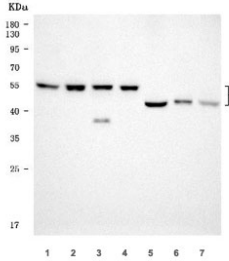
SERBP1 Antibody HEL FACS. Flow cytometry testing of human HEL cells with SERBP1 antibody at 1ug/million cells (blocked with goat sera); Red=cells alone, Green=isotype control, Blue= SERBP1 antibody.



SERBP1 Antibody Mouse ANA-1 FACS. Flow cytometry testing of mouse ANA-1 cells with SERBP1 antibody at 1ug/million cells (blocked with goat sera); Red=cells alone, Green=isotype control, Blue= SERBP1 antibody.



SERBP1 Antibody Rat RH35 FACS. Flow cytometry testing of rat RH35 cells with SERBP1 antibody at 1ug/million cells (blocked with goat sera); Red=cells alone, Green=isotype control, Blue= SERBP1 antibody.



SERBP1 Antibody Human Mouse Rat WB. Western blot testing of 1) human LNCaP, 2) human K562, 3) human Daudi, 4) human HEL, 5) rat kidney, 6) mouse skeletal muscle and 7) mouse kidney tissue lysate with SERBP1 antibody. Predicted molecular weight ~45 kDa but observed at 45-60 kDa.

Description

SERBP1 Antibody specifically binds Plasminogen activator inhibitor 1 RNA-binding protein, a protein that in humans is encoded by the SERBP1 gene. Enables SUMO binding activity; mRNA 3'-UTR binding activity; and ribosome binding activity. Involved in PML body organization. Located in cytosol and nucleus.

For highly specific detection of SERBP1-associated RNA regulatory signaling pathways, see our [SERBP1 Antibody / mRNA Binding Protein Antibody](#) page featuring clone SERBP1/3491 with WB, IHC, and HuProt(TM) microarray specificity validation data.

Application Notes

Optimal dilution of the SERBP1 antibody should be determined by the researcher.

Immunogen

Amino acids KGFVLHKSKSEEHAEDSVMDHH from the human protein were used as the immunogen for the SERBP1 antibody.

Storage

After reconstitution, the SERBP1 antibody can be stored for up to one month at 4oC. For long-term, aliquot and store at -20oC. Avoid repeated freezing and thawing.