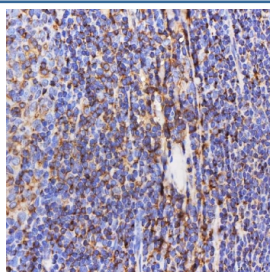


## Septin 6 Antibody / SEPT6 (RQ7480)

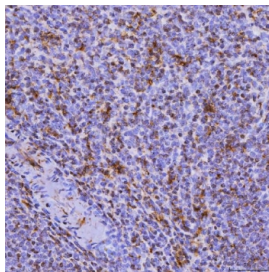
Catalog No.	Formulation	Size
RQ7480	0.5mg/ml if reconstituted with 0.2ml sterile DI water	100 ug

**Bulk quote request**

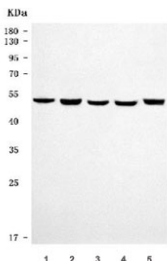
<b>Availability</b>	1-3 business days
<b>Species Reactivity</b>	Human, Mouse, Rat
<b>Format</b>	Antigen affinity purified
<b>Host</b>	Rabbit
<b>Clonality</b>	Polyclonal (rabbit origin)
<b>Isotype</b>	Rabbit IgG
<b>Purity</b>	Antigen affinity purified
<b>Buffer</b>	Lyophilized from 1X PBS with 2% Trehalose
<b>UniProt</b>	Q14141
<b>Applications</b>	Western Blot : 0.5-1ug/ml Immunohistochemistry (FFPE) : 2-5ug/ml Flow Cytometry : 1-3ug/million cells Direct ELISA : 0.1-0.5ug/ml
<b>Limitations</b>	This Septin 6 antibody is available for research use only.



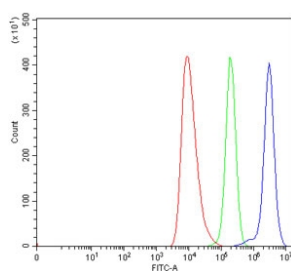
IHC staining of FFPE human tonsil tissue with Septin 6 antibody. HIER: boil tissue sections in pH8 EDTA for 20 min and allow to cool before testing.



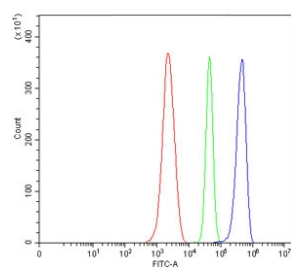
IHC staining of FFPE human spleen tissue with Septin 6 antibody. HIER: boil tissue sections in pH8 EDTA for 20 min and allow to cool before testing.



Western blot testing of 1) human SH-SY5Y, 2) human MOLT4, 3) rat thymus, 4) rat brain and 5) mouse brain tissue lysate with Septin 6 antibody. Predicted molecular weight ~50 kDa.



Flow cytometry testing of human HEL cells with Septin 6 antibody at 1ug/million cells (blocked with goat sera); Red=cells alone, Green=isotype control, Blue= Septin 6 antibody.



Flow cytometry testing of mouse ANA-1 cells with Septin 6 antibody at 1ug/million cells (blocked with goat sera); Red=cells alone, Green=isotype control, Blue= Septin 6 antibody.

## Description

Septin-6 is a protein that in humans is encoded by the SEPT6 gene. This gene is a member of the septin family of GTPases. Members of this family are required for cytokinesis. One version of pediatric acute myeloid leukemia is the result of a reciprocal translocation between chromosomes 11 and X, with the breakpoint associated with the genes encoding the mixed-lineage leukemia and septin 2 proteins. This gene encodes four transcript variants encoding three distinct isoforms. An additional transcript variant has been identified, but its biological validity has not been determined.

## Application Notes

Optimal dilution of the Septin 6 antibody should be determined by the researcher.

## Immunogen

E. coli-derived recombinant human protein (amino acids M1-E434) was used as the immunogen for the Septin 6 antibody.

## Storage

After reconstitution, the Septin 6 antibody can be stored for up to one month at 4°C. For long-term, aliquot and store at -20°C. Avoid repeated freezing and thawing.

