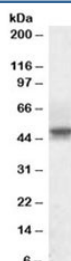


SEPT6 Antibody (R33433)

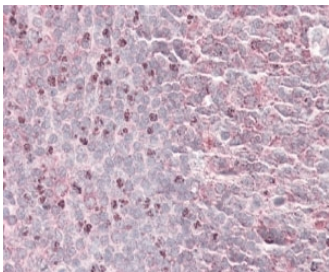
Catalog No.	Formulation	Size
R33433-100UG	0.5 mg/ml in 1X TBS, pH7.3, with 0.5% BSA (US sourced) and 0.02% sodium azide	100 ug

[Bulk quote request](#)

Availability	1-3 business days
Species Reactivity	Human
Predicted Reactivity	Cow, Dog
Format	Antigen affinity purified
Host	Goat
Clonality	Polyclonal (goat origin)
Isotype	Goat Ig
Purity	Antigen affinity
Gene ID	23157
Applications	Western Blot : 1-3ug/ml Immunohistochemistry (FFPE) : 3-5ug/ml ELISA (peptide) LOD : 1:4000
Limitations	This SEPT6 antibody is available for research use only.



Western blot testing of human testis lysate with SEPT6 antibody at 1ug/ml. Predicted molecular weight: ~50kDa.



IHC staining of FFPE human tonsil with SEPT6 antibody at 4ug/ml. HIER: steamed with pH6 citrate buffer, AP-staining. The dividing cells outside the germinal center are specifically stained.

Description

Additional name(s) for this target protein: Septin 6

Application Notes

Optimal dilution of the SEPT6 antibody should be determined by the researcher.

Immunogen

Amino acids DEVNAFKQRKTA were used as the immunogen for this SEPT6 antibody.

Storage

Aliquot and store the SEPT6 antibody at -20oC.