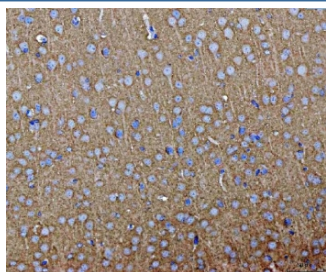


SEPT3 Antibody / Septin 3 (RQ7248)

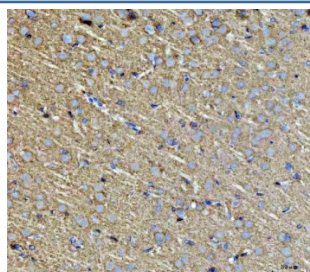
Catalog No.	Formulation	Size
RQ7248	0.5mg/ml if reconstituted with 0.2ml sterile DI water	100 ug

Bulk quote request

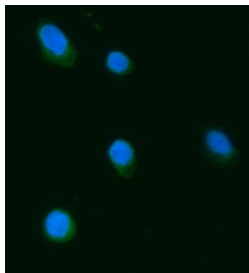
Availability	1-3 business days
Species Reactivity	Human, Mouse, Rat
Format	Antigen affinity purified
Clonality	Polyclonal (rabbit origin)
Isotype	Rabbit IgG
Purity	Antigen affinity purified
Buffer	Lyophilized from 1X PBS with 2% Trehalose
UniProt	Q9UH03
Applications	Western Blot : 0.5-1ug/ml Immunohistochemistry (FFPE) : 2-5ug/ml Immunofluorescence : 5ug/ml Flow Cytometry : 1-3ug/million cells Direct ELISA : 0.1-0.5ug/ml
Limitations	This SEPT3 antibody is available for research use only.



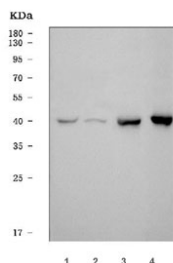
IHC staining of FFPE mouse brain tissue with SEPT3 antibody. HIER: boil tissue sections in pH8 EDTA for 20 min and allow to cool before testing.



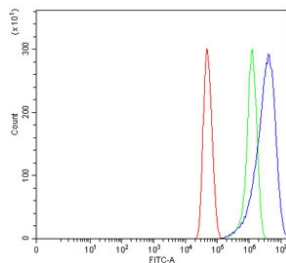
IHC staining of FFPE rat brain tissue with SEPT3 antibody. HIER: boil tissue sections in pH8 EDTA for 20 min and allow to cool before testing.



Immunofluorescent staining of FFPE human SiHa cells with SEPT3 antibody (green) and DAPI nuclear stain (blue). HIER: steam section in pH6 citrate buffer for 20 min.



Western blot testing of 1) human Daudi, 2) human SiHa, 3) rat brain and 4) mouse brain tissue lysate with SEPT3 antibody. Predicted molecular weight ~40 kDa.



Flow cytometry testing of human U-251 cells with SEPT3 antibody at 1ug/million cells (blocked with goat sera); Red=cells alone, Green=isotype control, Blue= SEPT3 antibody.

Description

This gene belongs to the septin family of GTPases. Members of this family are required for cytokinesis. Expression is upregulated by retinoic acid in a human teratocarcinoma cell line. The specific function of this gene has not been determined. Alternative splicing of this gene results in several transcript variants encoding different isoforms.

Application Notes

Optimal dilution of the SEPT3 antibody should be determined by the researcher.

Immunogen

Recombinant human protein (amino acids M1-E339) was used as the immunogen for the SEPT3 antibody.

Storage

After reconstitution, the SEPT3 antibody can be stored for up to one month at 4oC. For long-term, aliquot and store at -20oC. Avoid repeated freezing and thawing.

