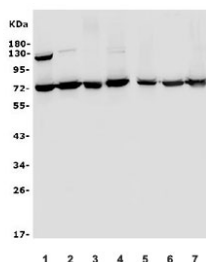


## SENP1 Antibody (RQ6070)

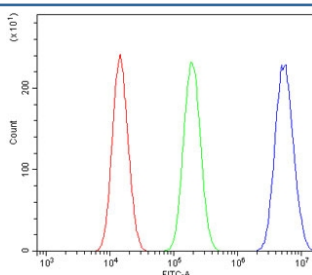
Catalog No.	Formulation	Size
RQ6070	0.5mg/ml if reconstituted with 0.2ml sterile DI water	100 ug

**Bulk quote request**

<b>Availability</b>	1-3 business days
<b>Species Reactivity</b>	Human
<b>Format</b>	Antigen affinity purified
<b>Clonality</b>	Polyclonal (rabbit origin)
<b>Isotype</b>	Rabbit IgG
<b>Purity</b>	Affinity purified
<b>Buffer</b>	Lyophilized from 1X PBS with 2% Trehalose and 0.025% sodium azide
<b>UniProt</b>	Q9P0U3
<b>Applications</b>	Western Blot : 0.5-1ug/ml Flow Cytometry : 1-3ug/million cells Direct ELISA : 0.1-0.5ug/ml
<b>Limitations</b>	This SENP1 antibody is available for research use only.



Western blot testing of human 1) Caco-2, 2) HepG2, 3) HeLa, 4) Jurkat, 5) U-87 MG, 6) Raji and 7) HL60 cell lysate with SENP1 antibody. Predicted molecular weight ~73 kDa.



Flow cytometry testing of human A549 cells with SENP1 antibody at 1ug/million cells (blocked with goat sera); Red=cells alone, Green=isotype control, Blue= SENP1 antibody.

## Description

Sentrin-specific protease 1 is a protein that in human is encoded by the SENP1 gene. This gene is mapped to 12q13.11. This gene encodes a cysteine protease that specifically targets members of the small ubiquitin-like modifier (SUMO) protein family. This protease regulates SUMO pathways by deconjugating sumoylated proteins. This protease also functions to process the precursor SUMO proteins into their mature form. Alternate splicing results in multiple transcript variants.

## Application Notes

Optimal dilution of the SENP1 antibody should be determined by the researcher.

## Immunogen

Recombinant human protein (amino acids N19-P619) was used as the immunogen for the SENP1 antibody.

## Storage

After reconstitution, the SENP1 antibody can be stored for up to one month at 4oC. For long-term, aliquot and store at -20oC. Avoid repeated freezing and thawing.