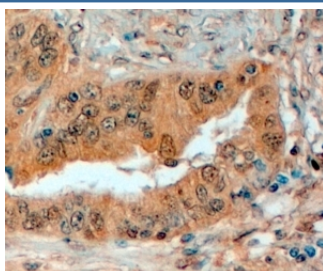


Semaphorin 3E Antibody (R34799)

Catalog No.	Formulation	Size
R34799-100UG	0.5 mg/ml in 1X TBS, pH7.3, with 0.5% BSA (US sourced) and 0.02% sodium azide	100 ug

[Bulk quote request](#)

Availability	1-3 business days
Species Reactivity	Human
Predicted Reactivity	Dog, Mouse, Pig, Rat
Format	Antigen affinity purified
Clonality	Polyclonal (goat origin)
Isotype	Goat Ig
Purity	Antigen affinity
Gene ID	9723
Applications	Immunohistochemistry (FFPE) : 4-6ug/ml ELISA (peptide) LOD : 1:128000
Limitations	This Semaphorin 3E antibody is available for research use only.



IHC testing of FFPE human prostate with Semaphorin 3E antibody at 4ug/ml. HIER: steamed with pH6 citrate buffer, HRP-staining.

Description

Additional name(s) for this target protein: SEMA3E

Application Notes

Optimal dilution of the Semaphorin 3E antibody should be determined by the researcher.

Immunogen

Amino acids NGGRYGTTKDYPDD were used as the immunogen for this Semaphorin 3E antibody.

Storage

Aliquot and store the Semaphorin 3E antibody at -20oC.