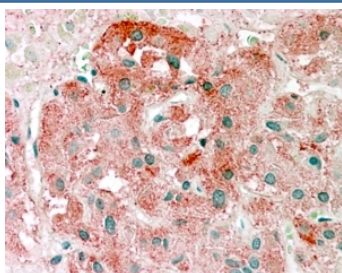


## Semaphorin 3E Antibody (R34564)

Catalog No.	Formulation	Size
R34564-100UG	0.5 mg/ml in 1X TBS, pH7.3, with 0.5% BSA (US sourced) and 0.02% sodium azide	100 ug

[Bulk quote request](#)

Availability	1-3 business days
Species Reactivity	Human
Format	Antigen affinity purified
Clonality	Polyclonal (goat origin)
Isotype	Goat Ig
Purity	Antigen affinity
Gene ID	9723
Applications	Immunohistochemistry (FFPE) : 2-4ug/ml ELISA (peptide) LOD : 1:64000
Limitations	This Semaphorin 3E antibody is available for research use only.



IHC testing of FFPE human adrenal gland with Semaphorin 3E antibody at 2.5ug/ml.  
HIER: steamed with pH6 citrate buffer, AP-staining.

### Description

Additional name(s) for this target protein: SEMA3E

### Application Notes

Optimal dilution of the Semaphorin 3E antibody should be determined by the researcher.

### Immunogen

Amino acids KPEHYRLPRHTLDS were used as the immunogen for this Semaphorin 3E antibody.

## Storage

Aliquot and store the Semaphorin 3E antibody at -20oC.